

4

*Litchfield / Whiting / Bowne / & Associates*

THE AMERICAN INSTITUTE OF ARCHITECTS ARCHIVES  
1735 New York Ave. NW, Washington, DC 20006

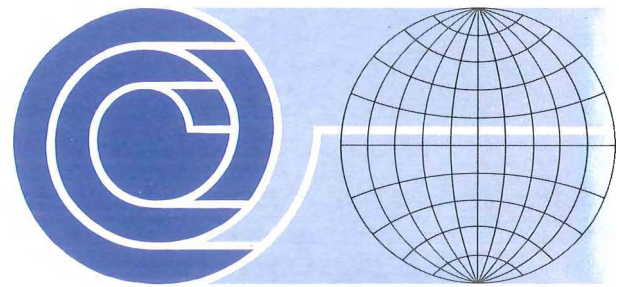


ARCHITECTS | ENGINEERS

# *Litchfield / Whiting / Bowne / & Associates*

---

Specializing in the practice  
of architecture and engineering  
on international assignments



292 Madison Avenue, New York 17, New York

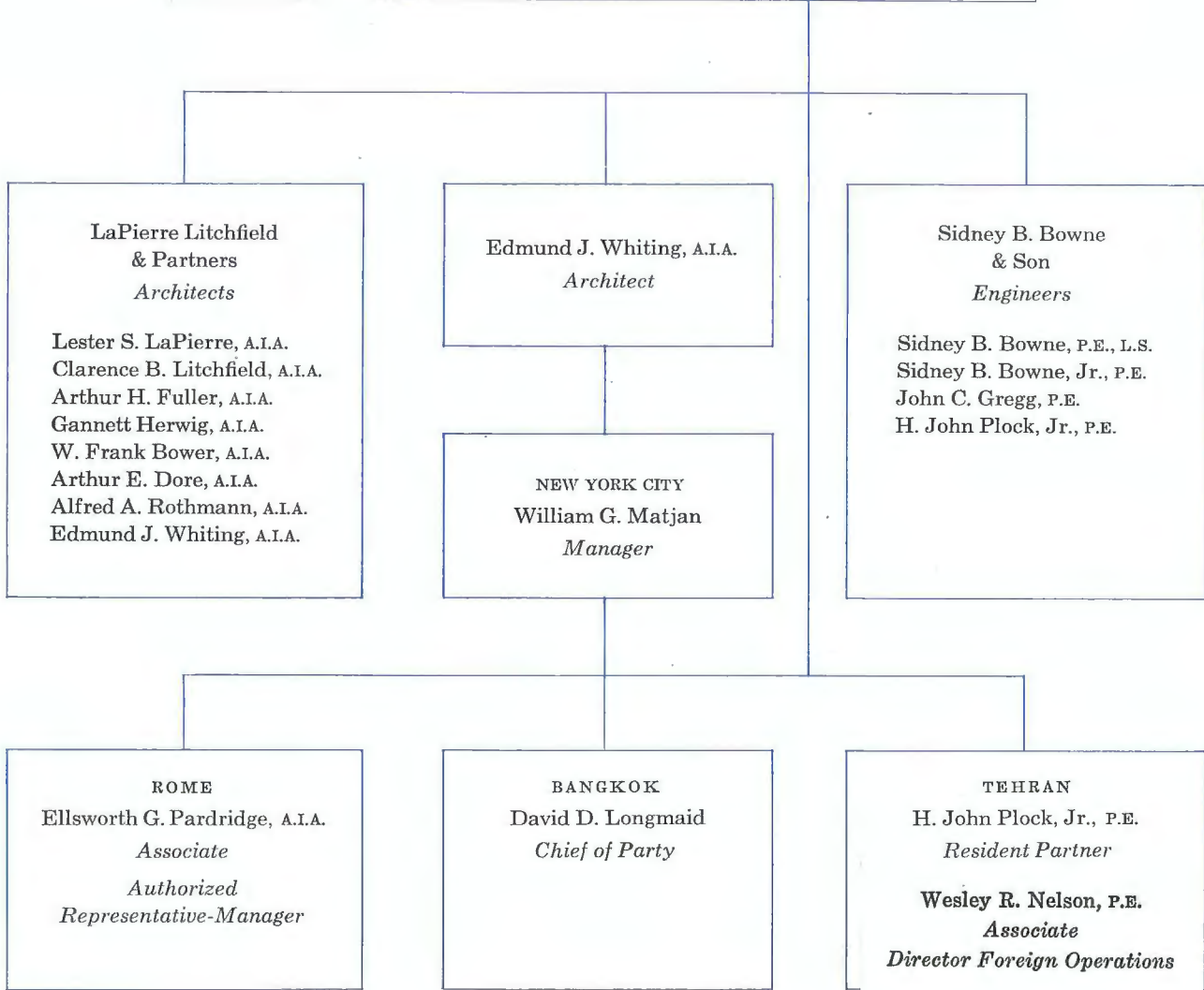
Cable : INHOSTAL NEWYORK, Telephone : Murray Hill 9-8540

Overseas offices : Viale Castro, Pretorio No. 116, Rome Italy • Cable : INHOSTAL ROME

Soi Aree, Bhaholyotin Road, Post Office Box 894, Bangkok, Thailand • Cable : INHOSTAL BANGKOK

Avenue Villa-Arak, Tehran, Iran • Cable : INHOSTAL TEHRAN

*Litchfield / Whiting / Bowne / & Associates*



CONSULTANTS Severud-Elstad-Krueger-Associates – Structural Engineers  
 Adams Howard & Greeley – City Planning  
 Henry W. Kolbe, M. D. – Hospital Consultant  
 V. C. Patterson & Associates, Inc. – Refrigeration, Air-conditioning

THE AMERICAN INSTITUTE OF ARCHITECTS ARCHIVES  
 1735 New York Ave. NW, Washington, DC 20006

## *Professional qualifications of the firm and its principals*

LITCHFIELD WHITING BOWNE & ASSOCIATES (formerly Litchfield Whiting Panero Severud & Associates and Litchfield Whiting Panero Associates) since 1952 has successfully carried out major architectural-engineering consulting assignments in the Middle East, Africa and south and southeast Asia. Clients have included the United States Government and the Governments of Iran, Iraq, Libya, Pakistan, Burma and Thailand.

Projects completed and under way include a 1000-bed medical center; hospitals; educational institutions; country-wide social development programs consisting of slaughterhouses, schools, hospitals, electric power and water supply facilities, roads, drainage and flood control and city and regional planning. The firm represented the United States at the 1958 United Nations regional planning conference in Tokyo.

LAPIERRE LITCHFIELD & PARTNERS (formerly Alfred Hopkins & Associates) has been active in major architectural fields since 1913, and has won international recognition for its design of hospitals, military installations, educational institutions, housing projects, office buildings, correctional institutions and commercial and industrial structures.

A measure of the firm's record of satisfactory performance for its clients is the fact that it has completed forty assignments, mostly military, for the United States Government, with construction costs totaling more than \$1,109,600,000; nine assignments for the State of New York with costs exceeding \$10,000,000; and seven assignments for the City of New York with costs amounting to \$46,675,000.

Among the firm's private clients are Western Electric Company, New York Telephone Company, Drew University, Virginia Polytechnic Institute, Radford College and Paterson State Teachers' College.

EDMUND J. WHITING started the practice of architecture in Mexico, D.F., in 1934, and since that time has attained international renown for his work in the design of medical installations.

From 1942 to 1949 Mr. Whiting was hospital architect for the Institute of Inter-American Affairs for the United States Government. He has designed more than thirty hospitals, medical centers, laboratories and health centers in Central and South America, Iran, Iraq, the Near and Far East, and Africa.

Included among Mr. Whiting's designs are the Roosevelt Medical Center in Guatemala City and the Nemazee Medical Center in Shiraz, Iran. He has been consultant to the Technical Cooperation Administration, the Economic Cooperation Administration, the International Cooperation Administration and the United States Public Health Service.

SIDNEY B. BOWNE & SON and its predecessor firms date back to 1922, when Mr. Bowne, Sr. established an engineering practice. The firm's fields of specialization include water supply, heating, ventilating, air conditioning, refrigeration, sewage disposal, incineration, drainage, highway construction, electrical and structural engineering and utilities distribution. It provides complete engineering service to governmental subdivisions, industries and individual clients.

## *Services to clients*

---

Litchfield Whiting Bowne & Associates provides a group of internationally experienced architects and engineers for institutional and industrial building design, military installations, city planning, airport design, hotel planning, installation of engineering systems, construction supervision and consulting, training and survey services.

## *Design approach*

---

The firm's designs and methods are based on highest attainable standards of American planning and construction – modified where necessary to local requirements.

Success in attaining economies in construction has been achieved because of emphasis on :

*Functional and efficient space arrangements.*

*Advantageous use of local materials and construction methods.*

*Design of economical and practical  
mechanical, electrical and civil systems and equipment,  
with simplicity of future maintenance in mind.*

The organization's extensive international background qualifies it to adapt designs to locale and the unique climatic, social and religious factors involved.

The principals are alert to opportunities to introduce newest American planning and construction techniques. However, they are sufficiently flexible to modify these innovations in terms of the customs, traditions and practical realities of the countries in which they work.

Architectural and  
engineering consultation

with special technical assistance to engineers, architects,  
government officials and professional technicians  
among our international clientele.

Administrative and  
organization consultation

including the preparation of administrative manuals,  
management procedures and standardization of building  
functions at various governmental levels.

Training and  
educational programs

for architects and engineers of client-nations, and the  
technical personnel of institutions and technical buildings.

Specialized  
technical services

specifying the fixed and movable equipment and  
supplies for buildings.

Surveys  
and reports

for clients requiring research into educational facilities,  
hospital programming, estimates and budget reports,  
assistance in fund-raising, preparation of brochures and  
manuals of instruction and maintenance.

International Hospital  
Surveys and Reports

Survey and Report on Expansion of General Hospital,  
Santa Ana, El Salvador, for Government of Salvador.

Survey and Report on Hospitals in Burma, at Rangoon, Akyab,  
Myitkyina, and Taunggyi, for the United States Public  
Health Service and Economic Cooperation Administration.

Survey and Report on Expansion of Central Jinnah  
Hospital, Karachi, Pakistan, for Government of Pakistan.

Surveys and Reports of Hospitals and Health Centers  
in Iran at Tehran, Tabriz, Babul, Isfahan, and Shiraz, for  
the Technical Cooperation Administration. Also preparation  
of prototype plans.

## Hospitals

Akyab, Burma	Akyab General Hospital	Babul, Iran	Health Center
Hmawbi, Burma	Rural Health Center	Hamadan, Iran	Mission Hospital
Kyaukpju, Burma	Regional Hospital	Isfahan, Iran	Health Center
Moulmein, Burma	General Hospital	Kerman, Iran	Health Center
Myitkyina, Burma	Regional Hospital	Marand, Iran	Hospital-Health Center
Rangoon, Burma	General Hospital Modernization	Meshed, Iran	Nurses School and Residence
Rangoon, Burma	Medical School	Resht, Iran	Mission Hospital
Rangoon, Burma	Nursing School, Residence	Rezaieh, Iran	Health Center
Rangoon, Burma	Union Central Medical Center	Sanandadj, Iran	Rest House
Toungoo, Burma	Health Center	Shiraz, Iran	Khalili Eye Hospital
Bogota, Colombia	National University Medical School	Shiraz, Iran	Nemazee Medical Center
Ciudad Trujillo, Dominican Republic	National Public Health Laboratory	Shiraz, Iran	Nursing School and Residence
Ambato, Ecuador	Maternity Hospital	Shiraz, Iran	Two Health Projects
Guayaquil, Ecuador	Out-Patients' Clinic	Shiraz, Iran	Health Center
Guayaquil, Ecuador	Tuberculosis Clinic	Tabriz, Iran	Hospital
Ibarra, Ecuador	Maternity Pavilion	Tchalous, Iran	Seven Health Projects
Latacunga, Ecuador	General Hospital, Infectious Diseases	Tehran, Iran	Hospitals (12-25 bed)
Otavalo, Ecuador	General Hospital	Various Locations, Iran	Fourteen Rural Dispensaries
Quito, Ecuador	Health Center and Offices for Sanidad	Baghdad, Iraq	Child Hospital
Quito, Ecuador	Maternity Hospital	Baghdad, Iraq	Maternity Hospital
Quito, Ecuador	Mental Hospital	Baghdad, Iraq	Medical Center
Riobamba, Ecuador	Municipal Laboratory	Tobruk, Libya	General Hospital
Santo Domingo de los Colorados, Ecuador	General Hospital	Zavia, Libya	Health Center
LaUnion, El Salvador	Hospital-Health Center	Southern Rhodesia	Washburn Memorial Hospital
Santiago de Maria, El Salvador	Hospital-Health Center	Lompoc, California	Hospital
Zacatecoluca, El Salvador	General Hospital	Groton, Connecticut	United States Public Health Service Hospital
Addis Ababa, Ethiopia	Makalle Hospital	Gainesville, Florida	Neuropsychiatric Veterans Administration Hospital
Guatemala City, Guatemala	Municipal Dispensary	Terre Haute, Indiana	United States Public Health Service Hospital
Guatemala City, Guatemala	Nursing School and Residence	Westwood, New Jersey	Pascack Valley Hospital
Guatemala City, Guatemala	Roosevelt Health Center	State of New Jersey	Consultation, Mental Health Program
Guatemala City, Guatemala	Tuberculosis Clinic	Camp Upton, New York	Convalescent Hospital and Additional Hospital Facilities
Zacapa, Guatemala	General Hospital	Lido Beach, New York	United States Naval Hospital
Tegucigalpa, Honduras	Nurses and Doctors Living Quarters	Manhattan Beach, New York	Manhattan Beach Hospital
Tegucigalpa, Honduras	Tuberculosis Sanatorium	Manhattan Beach, New York	United States Public Health Service Dental Clinic
		New York City, New York	General Medical Veterans Administration Hospital
		New York City, New York	Nurses School and Residence, Bellevue Hospital
		Wallkill, New York	Hospital for Minimum Security Institution
		Wassaic, New York	Infirmery Buildings
		Wassaic, New York	Psychiatric Hospital
		Woodbourne, New York	Hospital for Defective Delinquents
		East Liverpool, Ohio	General Hospital
		Lewisburg, Pennsylvania	United States Public Health Service Hospital
		Pittsburgh, Pennsylvania	Neuropsychiatric Veterans Administration Hospital
		Reading, Pennsylvania	Hospital for Berks County Penitentiary
		Rockview, Pennsylvania	Central Hospital
		Blacksburg, Virginia	Virginia Polytechnic Institute Hospital
		Powhatan, Virginia	Tuberculosis Hospital
		Southampton, Virginia	Hospital
		Milwaukee, Wisconsin	Institution Hospital

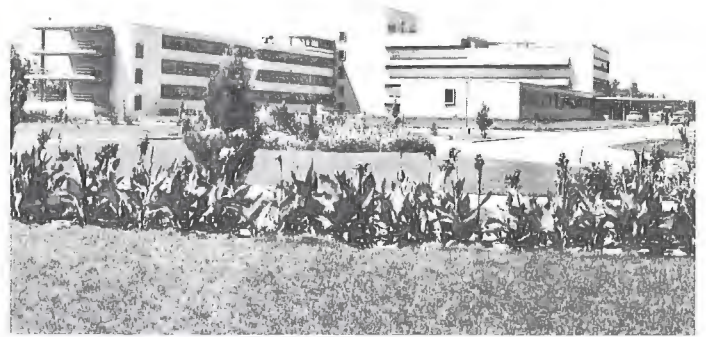
THE AMERICAN INSTITUTE OF ARCHITECTS ARCHIVES  
1735 New York Ave. NW, Washington, DC 20006



Medical Center, Baghdad, Iraq



Roosevelt Medical Center, Guatemala City, Guatemala



Nemazee Medical Center, Shiraz, Iran



General Medical Veterans Administration  
Hospital, New York City, N. Y.



Maternity Hospital, Baghdad, Iraq



*Correctional institutions*

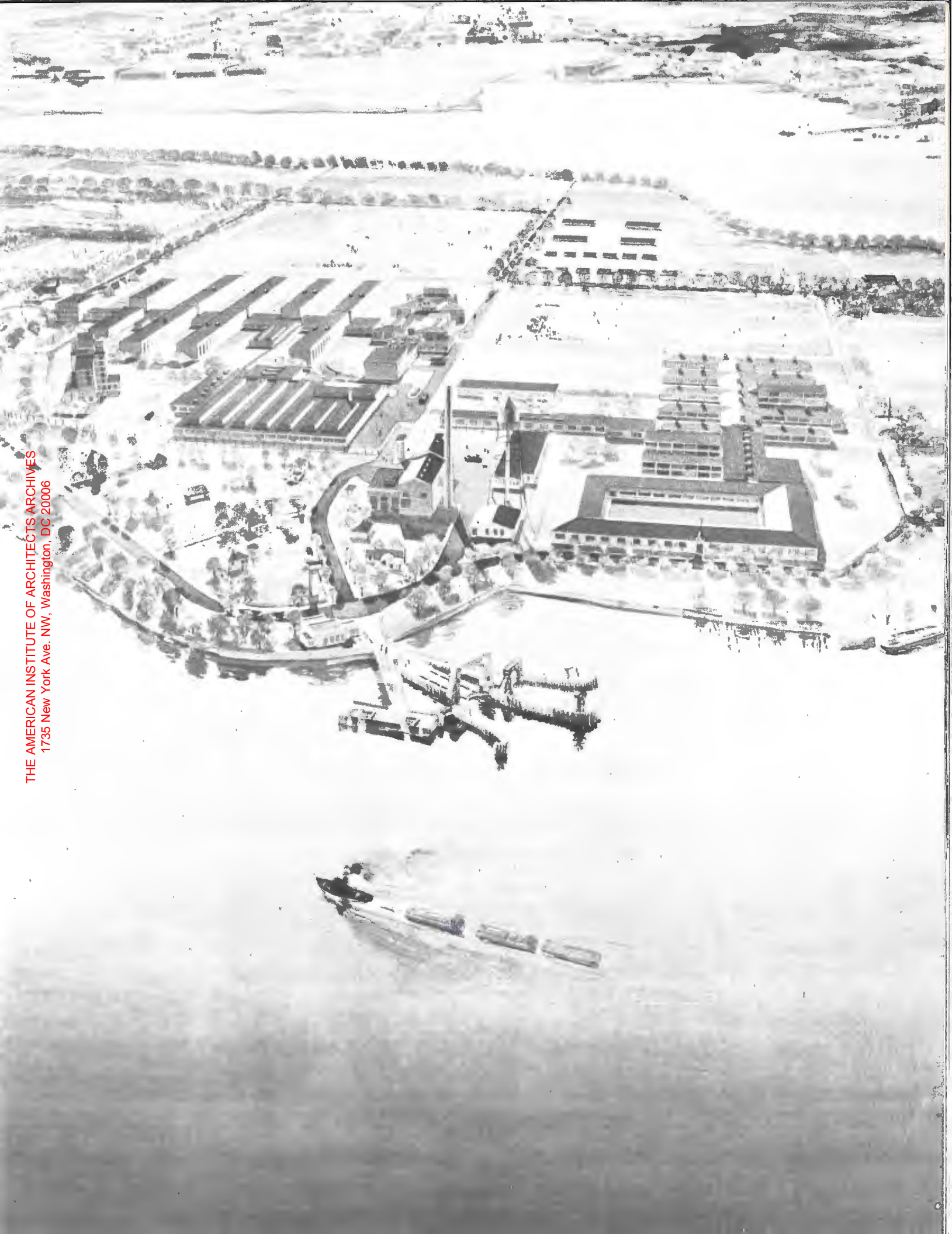


City Prison, New York City, New York

Baghdad, Iraq	Central Prison
Lompoc, California	Federal Penitentiary
Enfield, Connecticut	Connecticut State Prison
Hartford, Connecticut	Consultation, Hartford County Jail
Terre Haute, Indiana	Federal Penitentiary
Baltimore, Maryland	Consultation, City Jail
Clinton, New Jersey	Reformatory for Women
Brooklyn, New York	City Prison and Remand Shelter
Eastview, New York	Westchester County Penitentiary
Erie County, New York	Erie County Jail
New York City, New York	Analysis and Redesign of Rikers Island Workhouse and Penitentiary
New York City, New York	Second Avenue Magistrates Court and Jail
Wallkill, New York	Federal Penitentiary
Woodbourne, New York	New York Prison for Defective Delinquents
Lebanon, Ohio	Medium Security Reformatory
Lewisburg, Pennsylvania	Federal Penitentiary
Luzerne County, Pennsylvania	Institution for Defective Delinquents
Reading, Pennsylvania	Berks County Penitentiary
Rockview, Pennsylvania	Institution for Defective Delinquents
Capron, Virginia	Southampton Penitentiary Farm
Powhatan, Virginia	Virginia State Prison Farm
White Gate, Virginia	Bland Correctional Farm

Rikers Island Penitentiary and Workhouse, New York City, New York

THE AMERICAN INSTITUTE OF ARCHITECTS ARCHIVES  
1735 New York Ave. NW, Washington, DC 20006



*Military*

Thule, Greenland	Missile Base
Thule, Greenland	United States Air Force Base
Keflavik, Iceland	Air Force Base
Iran	United States Military Aid Program – Firing Ranges, Schools, Bleachers, Barracks
Alaskan-Canadian Arctic	United States Air Force, Distant Early Warning Line
Groton, Connecticut	United States Coast Guard Training School
New London, Connecticut	United States Coast Guard – Fort Trumbull
New London, Connecticut	United States Navy Submarine Base – Housing and Recreation Buildings



United States Air Force,  
 Distant Early Warning Line,  
 Alaskan-Canadian Arctic

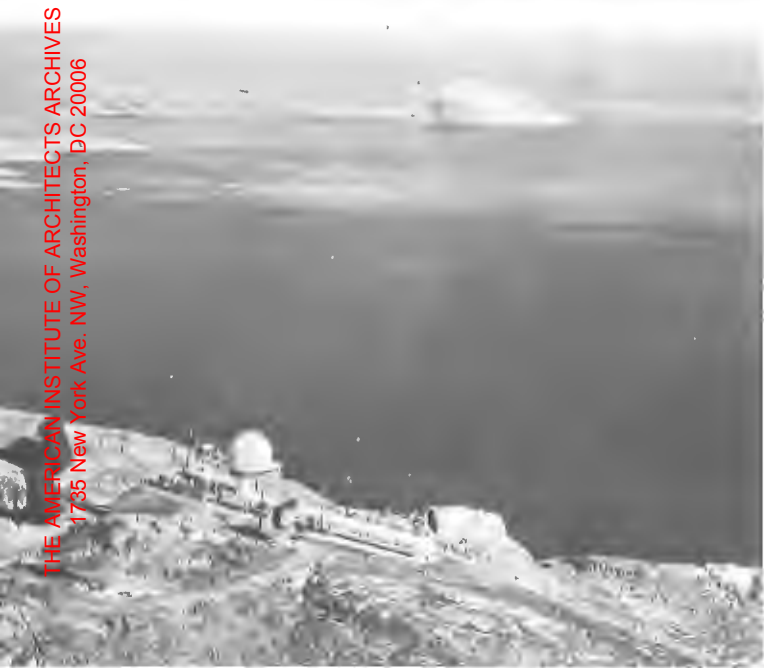


Belle Mead, New Jersey	Troop Housing
Camp Upton, New York	Troop Housing
Kings Point, New York	United States Merchant Marine Academy
Lido Beach, New York	United States Navy Training School
Long Island City, New York	Postal Concentration Center, United States Army
Manhattan Beach, New York	United States Coast Guard Training School
Sheepshead Bay, New York	United States Maritime Training School
Westhampton, New York	United States Aviation Gunnery Training Center



Naval Training Station, Lido Beach, New York

THE AMERICAN INSTITUTE OF ARCHITECTS ARCHIVES  
1735 New York Ave. NW, Washington, DC 20006



United States Air Force Base, Thule, Greenland



Postal Concentration Center, Long Island City, New York

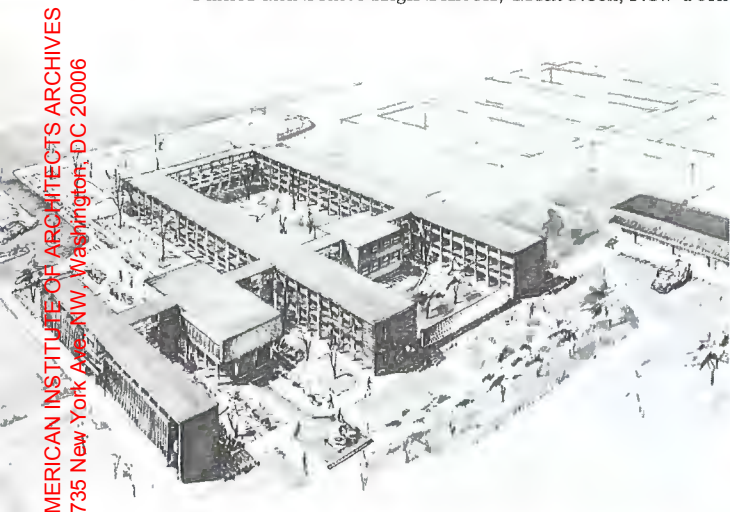
United States Merchant Marine Academy, Kings Point, New York

## *Educational*

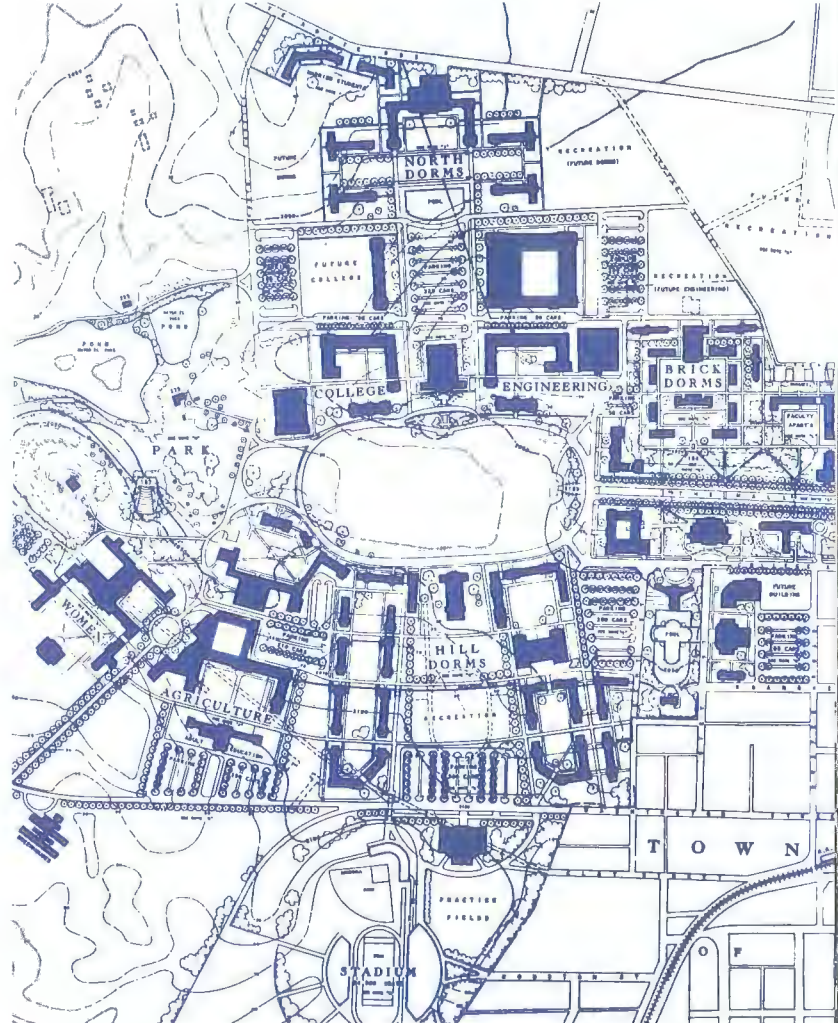
Rangoon, Burma	Nurses School – Medical Center	Shiraz, Iran	Primary School and Training Center
Bogota, Colombia	Medical School	Shiraz, Iran	Vocational Schools
Bogota, Colombia	National University	Shoushtaf, Iran	Primary School
Guatemala City, Guatemala	Nurses School – Roosevelt Medical Center	Sousangerd, Iran	Agricultural School
Abadab, Iran	Vocational and Industrial School	Sousangerd, Iran	Secondary School
Abadan, Iran	Education Department Building	Tabriz, Iran	Vocational Agricultural School
Abarghou, Iran	School	Tehran, Iran	Three Schools
Ahwaz, Iran	Technical School, Secondary School, Education Administration Building	Baghdad, Iraq	Nurses School – Medical Center
Ahwaz, Iran	Vocational Agricultural School	Sidi Mesri, Libya	Practical Arts and Agricultural School
Ahwaz, Iran	Vocational School, Agricultural School, Teachers' House	Peshawar, Pakistan	University of Peshawar, Agricultural College
Babolsar, Iran	Vocational Agricultural School	Caracas, Venezuela	Instituto de la Ciudad Universitaria
Bandar Abbas, Iran	Elementary School	Groton, Connecticut	United States Coast Guard Training School (3,900 petty officers)
Bandar Abbas, Iran	Two Schools	New London, Connecticut	United States Coast Guard Training School (2,400 petty officers)
Borazjan, Iran	School	New London, Connecticut	United States Maritime Commission Training School (2,400 enlisted men)
Fasa, Iran	Two Primary Schools	Madison, New Jersey	Drew University – Over-all campus plan and new structures
Firouzabad, Iran	Culture Center	Paterson, New Jersey	Paterson State Teachers' College Expansion program, new buildings
Ghalat, Iran	Primary School	Pequannock, New Jersey	High School (750 students)
Ghasr-Oldasht, Iran	Primary School	Brooklyn, New York	Public School Number 78 (1,622 students)
Ghasrshirin, Iran	Primary School	Brooklyn, New York	United States Maritime Commission Training School (11,492 enlisted men)
Guilan-Mazandarin, Iran	Three Schools	East Norwich, New York	Elementary School
Hoveizeh, Iran	Primary School	East Williston, New York	Junior-Senior High Schools (1,200 students)
Ilam, Iran	School	Great Neck, New York	Junior-Senior High Schools (2,600 students)
Isfahan, Iran	Five Schools	Kings Point, New York	United States Merchant Marine Academy (2,405 officers)
Kazeroun, Iran	Two Primary Schools	Lido Beach, New York	United States Navy Training School (5,000 men)
Kelardasht, Iran	Forestry School	Manhattan Beach, New York	United States Coast Guard Training School (5,057 enlisted men)
Kerman, Iran	Vocational Agricultural School	Monticello, New York	Four Elementary Schools (2,000 students)
Kerman, Iran	Vocational School and Industrial School	New Rochelle, New York	Survey of fourteen existing schools
Kermanshah, Iran	Primary School	New York City, New York	School for Nurses, Bellevue Hospital (850 nurses)
Kermanshah, Iran	Three Agricultural Schools, Stables, Vocational and Industrial School	Richmond County, New York	Public School Number 35 (450 students)
Khorramabad, Iran	Primary School	Rome, New York	New York State School for the Deaf (200 students)
Khorramshahr, Iran	School Auditorium	Ulster, New York	Elementary School (400 students)
Khorramshahr, Iran	Two Primary, One Secondary Schools	Westhampton, New York	United States Aviation Gunnery School (671 officers and men)
Khuzistan, Iran	Four Schools	Woodbourne, New York	Class, Shop Instructional Building
Koshan, Iran	Primary School	Yonkers, New York	Junior-Senior High School
Meshed, Iran	Vocational Agricultural School	Rockview, Pennsylvania	Pennsylvania Industrial School (1,000 students)
Razaich, Iran	Vocational Agricultural School	Blacksburg, Virginia	Virginia Polytechnic Institute (10,000 students)
Shiraz, Iran	Five Agricultural Schools, Teachers' House, Night School for Teachers, Kitchen, Laundry, Dormitory, Stables and Greenhouse	Radford, Virginia	Radford College (3,000 students) Over-all campus plan
Shiraz, Iran	Three Schools		
Shiraz, Iran	Nurses School – Nemazee Medical Center		



Junior and Senior High Schools, Great Neck, New York



College of Agriculture, Peshawar University, Pakistan



Virginia Polytechnic Institute, Blacksburg, Virginia



Drew University, Madison, New Jersey

## *Housing and hotels*

Bogota, Colombia	Apartment House
Tehran, Iran	Home for Children
Tehran, Iran	Housing Project
Acapulco, Mexico	Housing Project
Acapulco, Mexico	The Los Flamingos
Guaymas, Mexico	Playa de Cortes Hotel
New London, Connecticut	Housing for 2,308 men, United States Maritime Commission
Terre Haute, Indiana	Staff Housing for six families, United States Department of Justice



Tidewater Inn, Easton, Maryland

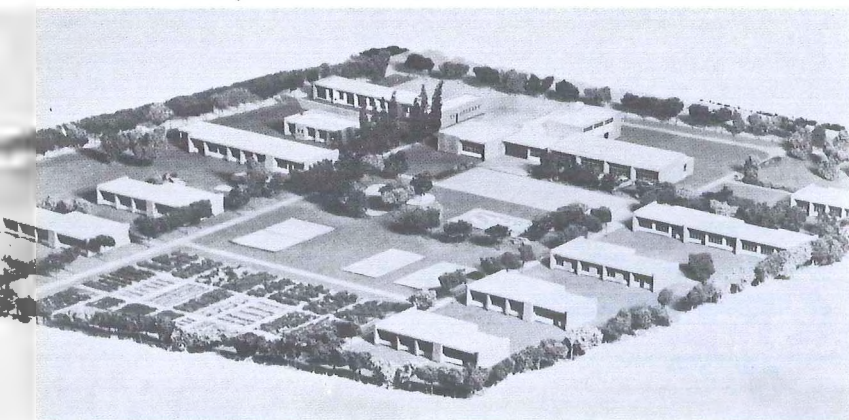
Easton, Maryland	Tidewater Inn
Bronx, New York	Gun Hill Houses (733 apartments) for New York City Housing Authority
Brooklyn, New York	Veterans' Housing (696 apartments) State of New York
Kings Point, New York	Housing for 2,405 men, United States Merchant Marine Academy
New York City, New York	George Washington Houses (1,515 apartments) for New York City Housing Authority
Lewisburg, Pennsylvania	Staff Housing for thirty families, United States Department of Justice



Gun Hill Houses, New York City, New York



George Washington Houses, New York City, New York



Home for Children, Tehran, Iran





## Public utility projects

THE AMERICAN INSTITUTE OF ARCHITECTS ARCHIVES  
1735 New York Ave. NW, Washington, DC 20006



### Electric Generating Stations

IRAN :  
Abadan  
Abadeh  
Ahwaz  
Andimeshk  
Arsanjan  
Bam  
Bandar Abbas  
Bandar Lengeh  
Behbahan  
Borazjan  
Bostan  
Bushehr  
Chabahar  
Darab  
Dezful  
Eghlid  
Elam  
Estahbanat  
Fasa  
Firouzabad  
Ghasr-Shirin  
Ghotabad  
Iranshahr  
Jahrom  
Jiroft  
Kangavar  
Kazeroun  
Kerman  
Kermanshah  
Khash  
Khorramabad  
Lar  
Mahan  
Marvdasht  
Minab  
Neyriz  
Rafsanjan  
Saravan  
Sarvestan  
Shahabad  
Shiraz  
Shoushtar  
Sirjan  
Sousangerd  
Zabol  
Zahadan  
Zarand  
Zarghan

### Water Supply

IRAN :  
Abadan  
Abadeh  
Andimeshk  
Bam  
Bandar Lengeh  
Bandar Mashour  
Bandar Tiab  
Bastak  
Behbahan  
Dailam  
Darab  
Dezful  
Elam  
Estahbanat  
Fasa  
Firouzabad  
Ghasr-Shirin  
Harsin  
Karand  
Kazeroun  
Kerman  
Khash  
Khorramabad  
Khorramshahr  
Khosrovi  
Lar  
Marvdasht  
Minab  
Rafsanjan  
Ramhormoz  
Sabzevaran  
Saravan  
Sirjan  
Zahedan  
Zarand  
Zarghan

NEW YORK :  
East Meadow  
Jericho  
Mineola  
Oyster Bay

### Sewage and Sewage Disposal

IRAN :  
Abadan  
Ghasr-Shirin  
Kermanshahr  
Khorramshahr  
Shoushtar

NEW YORK :  
Glen Cove  
Oyster Bay  
Roslyn

### Highway Projects and Highway Drainage

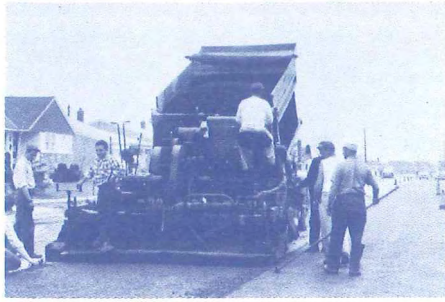
IRAN :  
Abadan  
Abadeh  
Ahwaz  
Bam  
Bandar Abbas  
Behbahan  
Dezful  
Fasa  
Iranshahr  
Jahrom  
Jiroft  
Kerman  
Kermanshahr  
Khash  
Khorramabad  
Rafsanjan  
Shiraz  
Sirjan  
West Shahabad  
Zabol  
Zahedan

NEW YORK :  
Massapequa  
Oyster Bay

### Civil Engineer Projects:

#### Flood Control

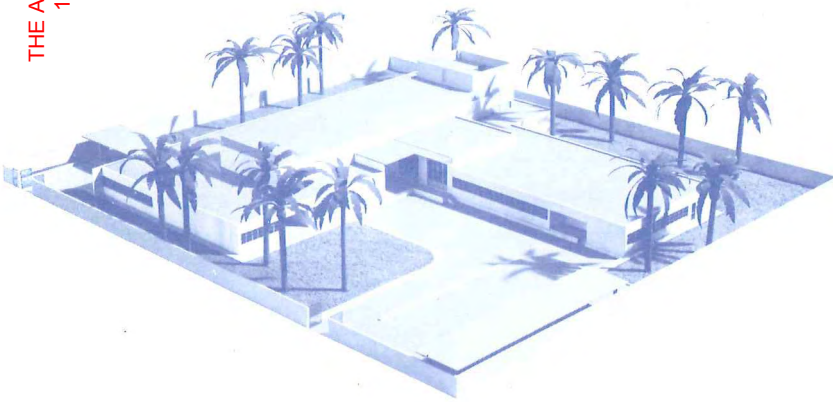
Iranshahr, Iran  
Kerman, Iran  
Khash, Iran  
Rafsanjan, Iran  
Shiraz, Iran  
Zahedan, Iran  
Bandar Abbas, Iran – Sea Wall  
Bushehr, Iran – Sea Wall  
Khorramshahr, Iran – River Wall  
Baghdad, Iraq – Sewage  
Treatment  
Oyster Bay, New York –  
Incinerator  
Roslyn, New York – Sewage  
Treatment



THE AMERICAN INSTITUTE OF ARCHITECTS ARCHIVES  
1735 New York Ave. NW, Washington, DC 20006



*General*



Audio Visual Center, Baghdad, Iraq

Guayaquil, Ecuador	Banco Nacional
Quito, Ecuador	Hipotecario Banco
Quito, Ecuador	Là Previsora
Various locations, Egypt	Thirty five Cold Storage Plants
Ahwaz, Iran	Bath House, Gendarme Headquarters
Shiraz, Iran	Community Center
Tehran, Iran	Municipal Slaughterhouse
Tehran, Iran	Office Building for Red Lion and Sun Society
Tehran, Iran	Office Building for Sherkat Sehami Iranmachine
Tehran, Iran	Orphanage
Various locations, Iran	Eight Slaughterhouses
Baghdad, Iraq	Audio Visual Center
Benghazi, Libya	Cold Storage Building
Mexico, D. F.	General Motors Assembly Plant
Managua, Nicaragua	Banco Nacional
Bangkok, Thailand	Regional Planning, Municipalities of Bangkok-Thonburi
Terre Haute, Indiana	Industrial Building, United States Department of Justice
Lansing, Michigan	R. E. Olds Building (25 floors)
Bloomfield, New Jersey	Bloomfield Savings Bank
Hempstead, New York	Island Federal Savings and Loan Association
Kings Point, New York	Docks and Mooring Basins, United States Merchant Marine Academy
Manhattan Beach, New York	Docks and Finger Piers, United States Coast Guard Training School
Massapequa, New York	South Shore Federal Savings and Loan Association, Branch
New Hyde Park, New York	Island Federal Savings and Loan Association of Hempstead, New Hyde Park Branch
New York City, New York	The Bank for Savings Annex Wing – Office Space and Parking Facilities, Branch Bank
New York City, New York	Bankers Federal Savings and Loan Association Second Avenue and Eighth Street Branch West Fourth Street and Avenue of the Americas Branch
New York City, New York	Fourth Federal Savings and Loan Association
New York City, New York	Government of Venezuela Offices
New York City, New York	The Hanover Bank Church Street Branch 41st Street Branch, 43rd Street Branch
Pawling, New York	National Bank of Pawling
Pawling, New York	Pawling Savings Bank
Queens, New York	Flushing Federal Savings and Loan Association
Queens, New York	Jackson Heights Savings and Loan Association
Sheepshead Bay, New York	Docks and Training Piers, United States Maritime Training School
Syosset, New York	Island Federal Savings and Loan Association, Branch
Akron, Ohio	Akron Savings and Loan (13 floors)
Columbus, Ohio	Buckeye Office Building (16 floors)
Washington, Pennsylvania	Washington Trust Building (10 floors)



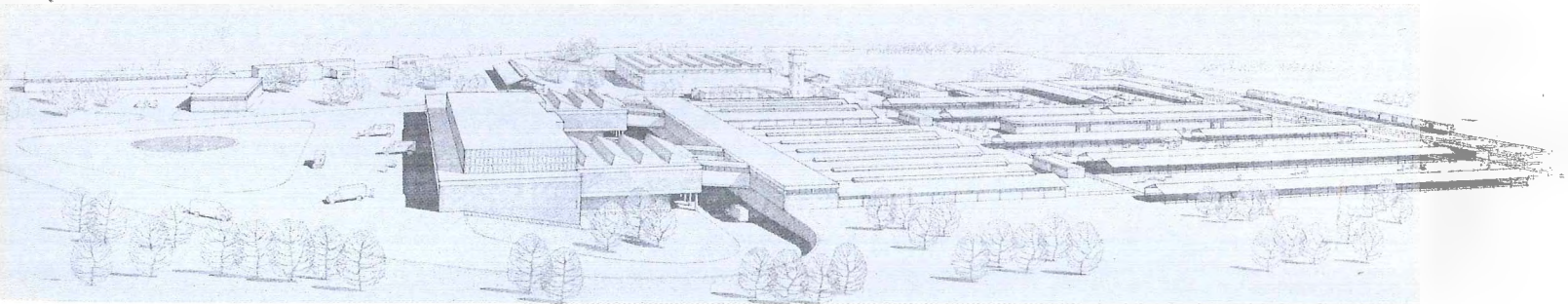
Office Building for Red Lion and Sun Society, Tehran, Iran



General Motors Assembly Plant, Mexico, D. F.



Office Building for Sherkat Sehami Iranmachine, Tehran, Iran



Slaughterhouse for the Municipality of Tehran, Iran

*Scope of services*

---

Health Centers  
Hospital Systems  
Hospitals  
Laboratories  
Medical Schools  
Schools for Nurses

Airports, Hangars, Runways  
Military Installations  
Missile Bases

Elementary and Secondary Schools  
Universities and Colleges  
Vocational and Agricultural Schools

Correctional Institutions

City Planning

Audio Visual Studios and Buildings  
Banks and Office Buildings  
Hotels and Motels  
Housing Developments  
Industrial Developments  
Slaughterhouses

Docks and Wharfage  
Flood Control  
Roads and Highways  
Surveys  
Waterfront and Marine Installations

Construction Supervision

Air Conditioning and Ventilating Systems  
Boiler Plants  
Electric Distribution Systems  
Electric Power and Generator Plants, Steam and Diesel  
Heating Systems  
High Voltage Transmission Lines  
Reactor Research Buildings  
Refrigeration and Cold Storage Plants  
Sewage Disposal Plants  
Steam Distribution Systems  
Street Lighting Systems  
Water Supply and Sanitary Systems

THE AMERICAN INSTITUTE OF ARCHITECTS ARCHIVES  
1735 New York Ave. NW, Washington, DC 20006

EXECUTIVE OFFICES:  
292 Madison Avenue  
New York 17, New York

