

ALFRED FELLHEIMER  
STEWART WAGNER  
ARCHITECTS AND ENGINEERS

**ALFRED FELLHEIMER      STEWARD WAGNER**  
ONE FIFTY FIVE EAST FORTY SECOND STREET

**ARCHITECTS & ENGINEERS**  
NEW YORK 17      NEW YORK

THE FIRM WAS ORGANIZED IN 1923 BY JOINING THE INDEPENDENT PRACTICES OF THE TWO PRINCIPALS. SINCE THAT TIME, IT HAS PRACTICED CONTINUOUSLY AS A COMPLETE ARCHITECTURAL AND ENGINEERING ORGANIZATION UNDER SINGLE CENTRALIZED RESPONSIBILITY AND CONTROL. THE WORK OF THE FIRM HAS INCLUDED MAJOR PROJECTS IN THE FIELDS OF SITE PLANNING; HIGHWAY, AIR AND RAILROAD TRANSPORTATION PROJECTS; RESEARCH AND LABORATORY FACILITIES; INDUSTRIAL PLANTS, POWER PLANTS AND COMMERCIAL BUILDINGS; SCHOOLS, HOUSING PROJECTS, HOSPITALS, BANKS AND NUMEROUS OTHER PUBLIC AND PRIVATE PROJECTS. THE ORGANIZATION COMPRISES SITE PLANNERS; ARCHITECTS; STRUCTURAL, MECHANICAL, ELECTRICAL AND CIVIL ENGINEERS; ESTIMATORS; SPECIFICATION WRITERS; FIELD SUPERINTENDENTS; AND ACCOUNTANTS—ENABLING IT TO PERFORM ANY AND ALL PROFESSIONAL SERVICES REQUIRED FROM THE INCEPTION OF PROJECTS TO THEIR COMPLETION FOR OCCUPANCY.

## **ALFRED FELLHEIMER** F.A.I.A. A.S.C.E.

BORN IN ILLINOIS. WAS GRADUATED FROM THE UNIVERSITY OF ILLINOIS WITH DEGREE OF B.S. IN ARCHITECTURE. JOINED THE FIRM OF FROST AND GRANGER, CHICAGO, AND WAS IN CHARGE OF MANY IMPORTANT RAILWAY PROJECTS, INCLUDING THE LA SALLE STREET STATION AT CHICAGO. LATER BECAME AN ASSOCIATE OF THE ARCHITECTURAL AND ENGINEERING FIRM OF REED AND STEM WITH OFFICES IN ST. PAUL, MINNESOTA, AND NEW YORK CITY. DIRECTED THEIR NEW YORK OFFICE, COVERING A WIDE RANGE OF PROJECTS AS ASSOCIATE AND CONSULTANT IN THE DEVELOPMENT AND DESIGN OF NUMEROUS RAILROAD PASSENGER STATIONS, OTHER RAILROAD IMPROVEMENTS, AND PUBLIC AND PRIVATE STRUCTURES—THE MOST NOTABLE BEING THE GRAND CENTRAL TERMINAL, NEW YORK CITY. AFTER THE DEATH OF CHARLES A. REED IN 1912, CONTINUED THE PRACTICE IN HIS OWN NAME; AND IN 1923 ENTERED INTO PARTNERSHIP WITH STEWARD WAGNER. ASIDE FROM THE JOINT WORK OF THE FIRM, HAS ACTED AS CONSULTANT ON THE WASHINGTON NATIONAL AIRPORT, TO THE CURTIS WRIGHT AIRPORT COMPANY ON AIRPORT TERMINAL IMPROVEMENTS, AND ON THE GREAT WESTERN RAILWAY OF ENGLAND. MEMBERSHIP IN PROFESSIONAL SOCIETIES INCLUDES AMERICAN INSTITUTE OF ARCHITECTS, AMERICAN SOCIETY OF CIVIL ENGINEERS, NATIONAL SOCIETY OF PROFESSIONAL ENGINEERS, BEAUX ARTS INSTITUTE OF DESIGN, AND NEW YORK BUILDING CONGRESS.

## **STEWART WAGNER** F.A.I.A.

BORN IN TEXAS. STUDIED ARCHITECTURE AT COLUMBIA UNIVERSITY AND THE BEAUX ARTS SCHOOL OF DESIGN; ALSO TRAVELED AND STUDIED EXTENSIVELY IN LATIN AMERICA AND EUROPE. EXPERIENCE WITH SEVERAL LEADING ARCHITECTURAL FIRMS OF THE UNITED STATES. DURING THIS PERIOD, WAS AWARDED FIRST PRIZE IN THE COMPETITION FOR THE MISSOURI STATE CAPITOL BUILDING, JEFFERSON CITY, MISSOURI. FROM 1914–1919 ENGAGED IN THE PRIVATE PRACTICE OF ARCHITECTURE IN NEW YORK CITY. ENTERED INTO PARTNERSHIP WITH ALFRED FELLHEIMER, AND IN 1923 THE FIRM OF ALFRED FELLHEIMER AND STEWARD WAGNER WAS OFFICIALLY ESTABLISHED. ASIDE FROM THE WORK OF THE FIRM, WAS APPOINTED BY BUREAU OF INDIAN AFFAIRS IN 1935 TO DESIGN INDIAN COMMUNITIES THROUGHOUT THE U. S.; IN 1936, WAS APPOINTED ARCHITECT FOR THE ARTHURDALE RESETTLEMENT PROJECT, WEST VIRGINIA, CONSISTING OF A COMPLETE COMMUNITY. MEMBERSHIP IN PROFESSIONAL SOCIETIES INCLUDES AMERICAN INSTITUTE OF ARCHITECTS, BEAUX ARTS INSTITUTE OF DESIGN, ARCHITECTURAL LEAGUE OF NEW YORK, AND NEW YORK SOCIETY OF ARCHITECTS.

## CARL A. VOLLMER A.I.A.

STUDIED ARCHITECTURE AT THE AMERICAN BEAUX ARTS INSTITUTE OF DESIGN. EXPERIENCE IN LEADING ARCHITECTURAL OFFICES AND PRIVATE PRACTICE IN NEW YORK CITY SINCE 1916. PRINCIPAL ARCHITECT FOR THE SUBURBAN RESETTLEMENT ADMINISTRATION 1935-1937. DEVOTED MANY YEARS TO THE STUDY OF HOUSING AND HAS BEEN THE ARCHITECT FOR OVER A DOZEN MAJOR HOUSING PROJECTS. SINCE 1944 HAS BEEN AN ASSOCIATE OF ALFRED FELLHEIMER AND STEWARD WAGNER. MEMBERSHIP IN PROFESSIONAL SOCIETIES INCLUDES AMERICAN INSTITUTE OF ARCHITECTS.

## ROLAND A. WANK F.A.I.A.

WAS GRADUATED FROM GERMAN TECHNICAL UNIVERSITY, BRUNN, WITH DEGREE OF ARCHITECTURAL ENGINEER. SERVED AS CHIEF ARCHITECT OF EUROPEAN ENGINEERING AND CONSTRUCTION ORGANIZATIONS. ESTABLISHED ARCHITECTURAL PRACTICE IN MIAMI, FLORIDA, IN 1925. ASSOCIATED WITH FIRMS OF SPRINGSTEEN AND GOLDHAMMER, AND FELLHEIMER AND WAGNER FROM 1927-1933, DURING WHICH TIME THE A.I.A. GOLD MEDAL WAS AWARDED TO THE GRAND STREET APARTMENTS IN NEW YORK CITY, ON WHICH PROJECT HE WAS CHIEF DESIGNER. WAS HEAD ARCHITECT OF TENNESSEE VALLEY AUTHORITY FROM 1933-1944, AND NOW SERVES AS ARCHITECTURAL CONSULTANT TO THAT AGENCY ON POWER PLANTS. DURING THIS PERIOD, BY INTRAGOVERNMENTAL ARRANGEMENT, WAS CHIEF ARCHITECT OF THE GREENHILLS COMMUNITY FOR THE SUBURBAN RESETTLEMENT ADMINISTRATION, AND CHIEF CONSULTING ARCHITECT FOR THE RURAL ELECTRIFICATION ADMINISTRATION. FROM 1944 THROUGH 1945 WAS CHIEF OF DESIGN DEPARTMENT OF ALBERT KAHN ASSOCIATES, ARCHITECTS AND ENGINEERS, DETROIT, MICHIGAN; JOINED FELLHEIMER AND WAGNER AS AN ASSOCIATE IN 1945. IN 1946 SERVED AS ARCHITECTURAL CONSULTANT TO THE UNITED NATIONS HEADQUARTERS COMMISSION. MEMBERSHIP IN PROFESSIONAL SOCIETIES INCLUDES AMERICAN INSTITUTE OF ARCHITECTS, AMERICAN INSTITUTE OF PLANNERS, AND NATIONAL ASSOCIATION OF HOUSING OFFICIALS.

## PARTIAL LIST OF PROJECTS

RESEARCH AND DEVELOPMENT BUILDING, ROCHESTER, NEW YORK, AND WAREHOUSE, NEW YORK CITY, FOR EASTMAN KODAK COMPANY

RESEARCH CENTER AT WILSON DAM, ALABAMA, FOR TENNESSEE VALLEY AUTHORITY

CHAIN OF FORTY BUILDING STRUCTURES AND SITE DEVELOPMENTS FOR NEW JERSEY TURNPIKE AUTHORITY

CHEMICAL PLANT AND RESEARCH BUILDINGS, NUTLEY, NEW JERSEY, FOR HOFFMANN - LA ROCHE, INC.

INDUSTRIAL BUILDINGS AT BRISTOL, PENNSYLVANIA, AND HOUSTON, TEXAS, FOR ROHM & HAAS

MASTER PLANNING OF INDUSTRIAL PLANT SITES IN PENNSYLVANIA, TEXAS, AND ILLINOIS, FOR ROHM & HAAS (CONSULTING ARCHITECTS)

SHIPPING BUILDING, METUCHEN, NEW JERSEY, FOR JOHNSON & JOHNSON

DEPARTMENT STORE, MONTCLAIR, NEW JERSEY, FOR HAHNE & COMPANY

INDUSTRIAL PLANT, RUTHERFORD, NEW JERSEY, FOR BECTON, DICKINSON & COMPANY

INDUSTRIAL PLANT AND MASTER PLANNING OF PROPERTY, COLUMBUS, NEBRASKA, FOR BECTON, DICKINSON & COMPANY

THEATRE, BANK AND COMMERCIAL BUILDING, NEW YORK CITY, FOR NEW YORK LIFE INSURANCE COMPANY

INDUSTRIAL PLANTS, LOS ANGELES, CALIFORNIA, AND NEW YORK CITY, FOR WARNER-HUDNUT, INC.

SURGICAL AND OUT-PATIENT DEPARTMENTS, BELLEVUE HOSPITAL, NEW YORK CITY, FOR CITY OF NEW YORK  
LESLIE APARTMENTS, FOREST HILLS GARDENS, NEW YORK, FOR ROBERT M. HARRISS  
FARRAGUT HOUSING PROJECT, BROOKLYN, NEW YORK, FOR NEW YORK CITY HOUSING AUTHORITY  
ALBANY HOUSING PROJECT, BROOKLYN, NEW YORK, FOR NEW YORK CITY HOUSING AUTHORITY  
MAC LEAY HOUSING PROJECT, NEW ROCHELLE, NEW YORK, FOR NEW ROCHELLE HOUSING AUTHORITY  
PARKSIDE GARDENS HOUSING PROJECT, HEMPSTEAD, LONG ISLAND, NEW YORK, FOR HEMPSTEAD HOUSING AUTHORITY  
WINBROOK HOUSING PROJECT, WHITE PLAINS, NEW YORK, FOR WHITE PLAINS HOUSING AUTHORITY  
MOUNT VERNON HOUSES, MOUNT VERNON, NEW YORK, FOR MOUNT VERNON HOUSING AUTHORITY  
OFFICE BUILDING, NEW YORK CITY, FOR NEW YORK CITY HOUSING AUTHORITY (NOW UNITED NATIONS LIBRARY)  
QUEENS COLLEGE SCIENCE BUILDING, FLUSHING, NEW YORK, FOR NEW YORK CITY BOARD OF HIGHER EDUCATION  
RESEARCH LABORATORY, MORRISTOWN, NEW JERSEY, FOR ALLIED CHEMICAL & DYE CORPORATION  
DISTRIBUTION WAREHOUSES AND OFFICES, LYNDHURST, NEW JERSEY, BUFFALO AND SYRACUSE, NEW YORK, FOR PETER A. FRASSÉ & COMPANY, INC.  
MOTOR TRANSPORT RECEPTION CENTER, CARTERET, NEW JERSEY, FOR U. S. CORPS OF ENGINEERS  
900-BED GENERAL HOSPITAL, ELMHURST, NEW YORK, FOR CITY OF NEW YORK (CO-ARCHITECTS)  
TUBERCULOSIS SANITARIUM, BETHPAGE, NEW YORK, FOR NASSAU COUNTY  
TEXTILE BUILDING, GYMNASIUM AND STUDENT BUILDING, RUTHERFORD, NEW JERSEY, FOR FAIRLEIGH DICKINSON COLLEGE  
COMMUNITY SCHOOL, ARTHURDALE, WEST VIRGINIA, FOR U. S. GOVERNMENT  
PUBLIC SCHOOL NO. 40, NEW YORK CITY, FOR NEW YORK CITY BOARD OF EDUCATION  
TELEVISION AND BROADCASTING STUDIOS, NEW YORK CITY, FOR COLUMBIA BROADCASTING SYSTEM, INC.  
TELEVISION STUDIOS, NEW YORK CITY AND WASHINGTON, D. C., FOR ALLAN B. DU MONT LABS, INC.  
COMPLETE COMMUNITIES, INCLUDING HOUSING, EDUCATIONAL, INDUSTRIAL AND COMMERCIAL ENTERPRISES FOR BUREAU OF INDIAN AFFAIRS

CONTINUED NEXT PAGE

BROADCASTING STUDIOS, NEW YORK CITY, FOR STATION WNEW

BRANCH BANKS, NEW YORK CITY, FOR CORN EXCHANGE BANK TRUST COMPANY

BRANCH BANKS, NEW YORK CITY, FOR TRADE BANK AND TRUST COMPANY

RESEARCH LABORATORY, PATERSON, NEW JERSEY, FOR THE LINEN THREAD COMPANY, INC.

TOWN HALL, HEMPSTEAD, LONG ISLAND, NEW YORK, FOR TOWN OF HEMPSTEAD

HOME FOR THE AGED, HEMPSTEAD, LONG ISLAND, NEW YORK, FOR TOWN OF HEMPSTEAD

DISTRIBUTION WAREHOUSE, BERLIN, CONNECTICUT, FOR KRAFT FOODS COMPANY

POWER HOUSE, GREENSBORO, NORTH CAROLINA, FOR WOMEN'S COLLEGE OF NORTH CAROLINA

# PROJECTS IN THE FIELD OF TRANSPORTATION

ECONOMIC AND SITE PLANNING OF HIGHWAY SERVICE FACILITIES FOR THE NEW JERSEY TURNPIKE AUTHORITY

ARCHITECTURAL CONSULTING ON ENGINEERING STRUCTURES FOR THE NEW JERSEY TURNPIKE AUTHORITY

GRAND CENTRAL STATION IMPROVEMENTS, NEW YORK CITY; NEW YORK CENTRAL RAILROAD (ASSOCIATE ARCHITECTS)

DETROIT PASSENGER TERMINAL AND OFFICE BUILDING, DETROIT, MICHIGAN; MICHIGAN CENTRAL RAILROAD (ASSOCIATE ARCHITECTS)

PASSENGER STATION AND OFFICE BUILDING, BUFFALO, NEW YORK; NEW YORK CENTRAL RAILROAD

CINCINNATI UNION STATION, CINCINNATI, OHIO; CINCINNATI UNION STATION COMPANY

UNION PASSENGER STATION, NORFOLK, VIRGINIA; NORFOLK TERMINAL COMPANY

PASSENGER STATION AND OFFICE BUILDING, SPRINGFIELD, MASSACHUSETTS; BOSTON & ALBANY RAILROAD

NORTH STATION IMPROVEMENTS, BOSTON, MASSACHUSETTS; BOSTON & MAINE RAILROAD

UNION STATION, OFFICE BUILDING AND GRADE CROSSING ELIMINATION, MACON, GEORGIA; SOUTHERN RAILWAY & CENTRAL GEORGIA RAILROAD

PASSENGER STATION AND GRADE CROSSING ELIMINATION, HAMILTON, ONTARIO, CANADA; TORONTO, HAMILTON & BUFFALO RAILWAY

UNION PASSENGER STATION, RUTLAND, VERMONT; CENTRAL VERMONT RAILWAY & RUTLAND RAILROAD

PASSENGER STATION AND GRADE CROSSING ELIMINATION, GREENSBORO, NORTH CAROLINA; SOUTHERN RAILWAY

PASSENGER STATION, WINSTON-SALEM, NORTH CAROLINA; SOUTHERN RAILWAY

PASSENGER STATION AND OFFICE BUILDING, UTICA, NEW YORK; NEW YORK CENTRAL RAILROAD

PASSENGER STATION AND OFFICE BUILDING, ERIE, PENNSYLVANIA; LAKE SHORE & MICHIGAN SOUTHERN RAILROAD

PASSENGER STATION AND OFFICE BUILDING AND GRADE CROSSING ELIMINATION, SOUTH BEND, INDIANA; NEW YORK CENTRAL RAILROAD

PASSENGER STATION AND OFFICE BUILDING AND GRADE CROSSING ELIMINATION, YOUNGSTOWN, OHIO; NEW YORK CENTRAL RAILROAD

PASSENGER STATION, SCHENECTADY, NEW YORK; NEW YORK CENTRAL RAILROAD

PASSENGER STATION AND GRADE CROSSING ELIMINATION, ELYRIA, OHIO; NEW YORK CENTRAL RAILROAD

POWER HOUSES AND SUB-STATIONS, YONKERS AND PT. MORRIS, NEW YORK; GRAND CENTRAL TERMINAL ELECTRIFICATION

GRADE CROSSING ELIMINATION, LOUISVILLE, KENTUCKY; KENTUCKY & INDIANA TERMINAL RAILROAD

ELEVEN SUBURBAN PASSENGER STATIONS IN NEW YORK FOR NEW YORK CENTRAL RAILROAD

PADDINGTON STATION, LONDON, ENGLAND; GREAT WESTERN RAILWAY (CONSULTING ARCHITECTS)

STATE STREET STATION IMPROVEMENTS, CHICAGO, ILLINOIS; CHICAGO & WESTERN INDIANA RAILROAD (CONSULTING ARCHITECTS)

FREIGHT DEVELOPMENT STUDY, DETROIT, MICHIGAN; MICHIGAN CENTRAL RAILROAD (CONSULTING ARCHITECTS)

PROPOSED SOUTH SIDE TERMINAL IMPROVEMENTS, CHICAGO, ILLINOIS; NEW YORK CENTRAL RAILROAD (CONSULTING ARCHITECTS)

PASSENGER STATION IMPROVEMENTS, MONTREAL, CANADA; CANADIAN PACIFIC RAILWAY (CONSULTING ARCHITECTS)

PASSENGER STATION IMPROVEMENTS, DAIREN, MANCHURIA; JAPANESE IMPERIAL RAILWAYS (CONSULTING ARCHITECTS)

PROPOSED JOINT DEVELOPMENT LAKE FRONT PROPERTY, CHICAGO, ILLINOIS; ILLINOIS CENTRAL & MICHIGAN CENTRAL RAILROAD (CONSULTING ARCHITECTS)

NATIONAL AIRPORT, WASHINGTON, D. C.; CIVIL AERONAUTICS AUTHORITY (CONSULTING ARCHITECTS)



THE FOLLOWING PAGES SHOW REPRESENTATIVE WORK OF THE FIRM



CINCINNATI UNION TERMINAL



N.Y.C.R.R. STATION, BUFFALO, N. Y.



JOHNSON & JOHNSON, SHIPPING BUILDING, METUCHEN, N. J.

JOHNSON & JOHNSON, ENTRANCE PORTICO





SHIPPING ROOM



RECEPTION LOBBY



NEW YORK CITY HOUSING AUTHORITY  
OFFICE BUILDING



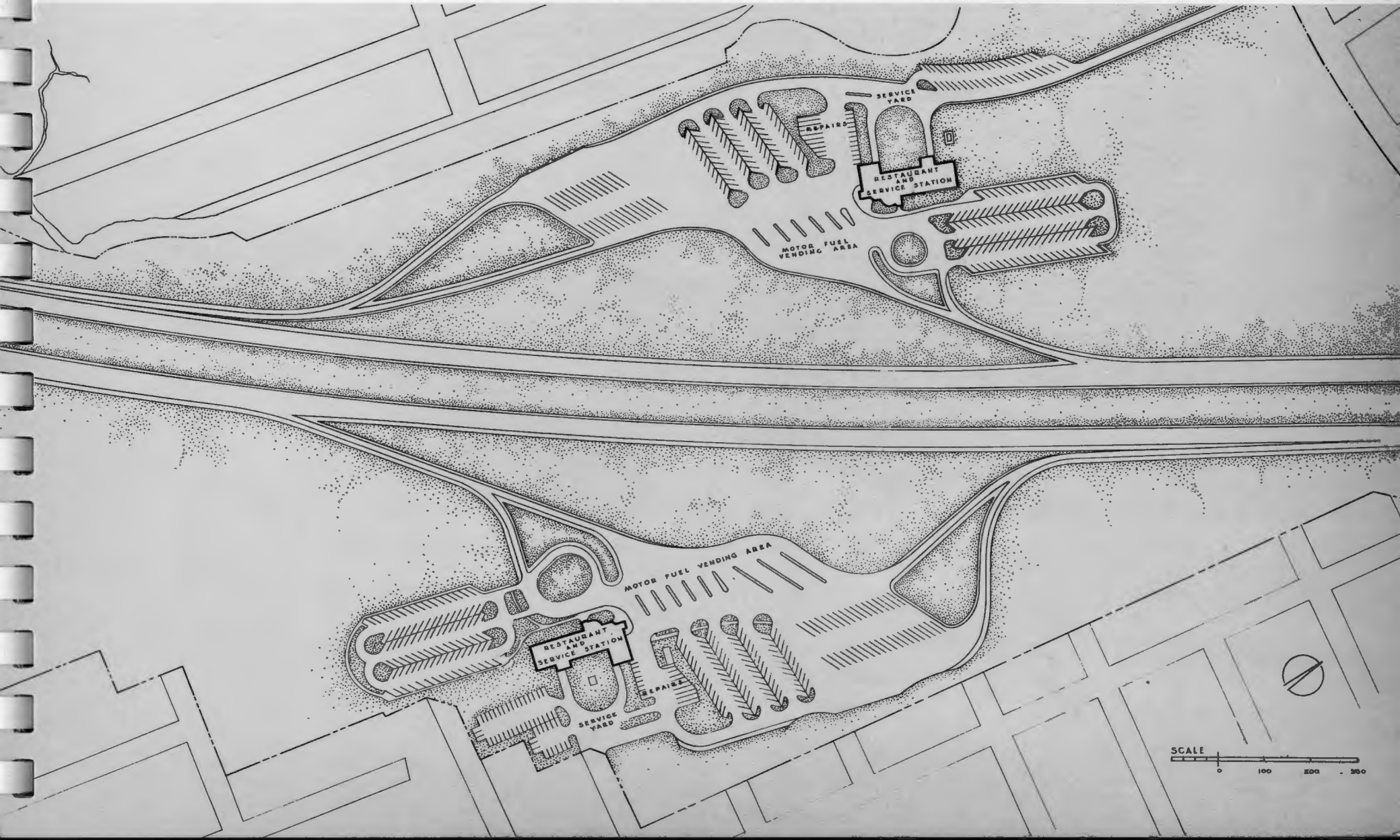
NEW JERSEY TURNPIKE, GEORGE WASHINGTON BRIDGE TOLL STATION





ARCHITECTURAL DESIGN OF  
NEW JERSEY TURNPIKE  
ENGINEERING FEATURES

NEW JERSEY TURNPIKE, CONCESSION AREAS AND BUILDINGS



SCALE  
0 100 200 300



NEW JERSEY TURNPIKE, MEDIUM SIZE CONCESSION BUILDING

ENTRANCE DETAIL



NEW JERSEY TURNPIKE  
LARGE CONCESSION BUILDING

NEW JERSEY TURNPIKE, ADMINISTRATION BUILDING

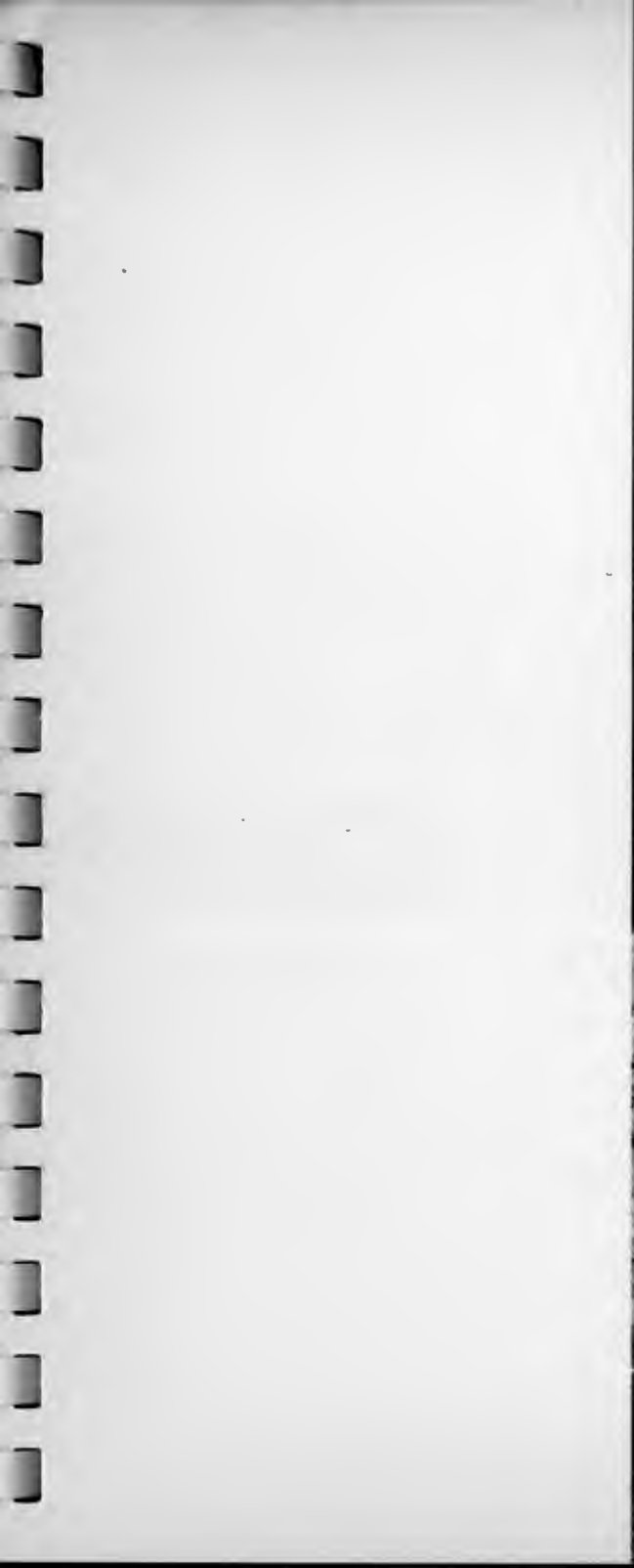




NEW JERSEY  
TURNPIKE  
AUTHORITY



ARCHITECTURAL DESIGN OF NEW JERSEY TURNPIKE ENGINEERING FEATURES

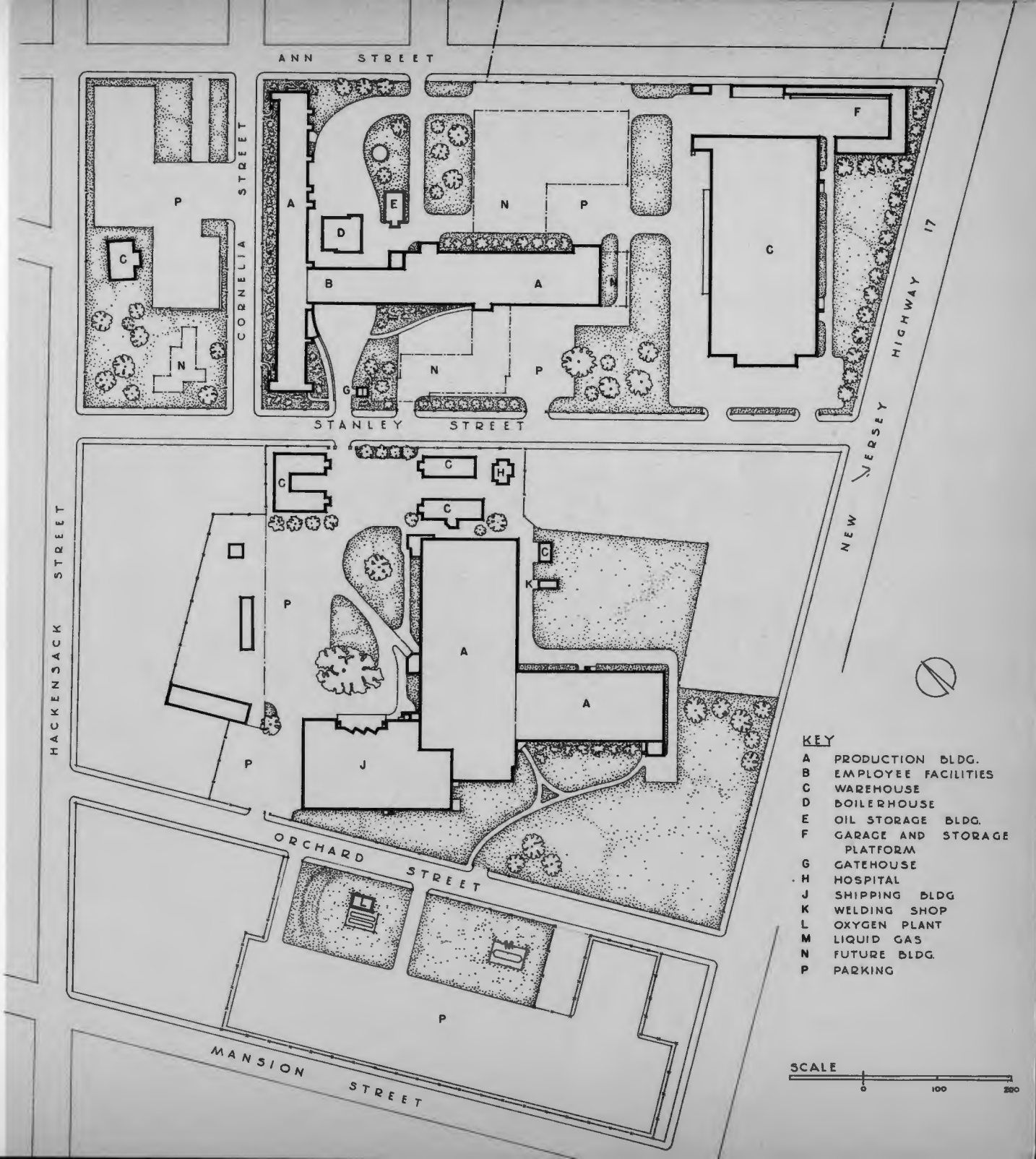






NEW JERSEY TURNPIKE, MAINTENANCE BUILDING

BECTON, DICKINSON & CO.  
 RUTHERFORD, N. J.  
 PARTIAL SITE PLAN



KEY

- A PRODUCTION BLDG.
- B EMPLOYEE FACILITIES
- C WAREHOUSE
- D BOILERHOUSE
- E OIL STORAGE BLDG.
- F GARAGE AND STORAGE PLATFORM
- G GATEHOUSE
- H HOSPITAL
- J SHIPPING BLDG
- K WELDING SHOP
- L OXYGEN PLANT
- M LIQUID GAS
- N FUTURE BLDG.
- P PARKING

SCALE



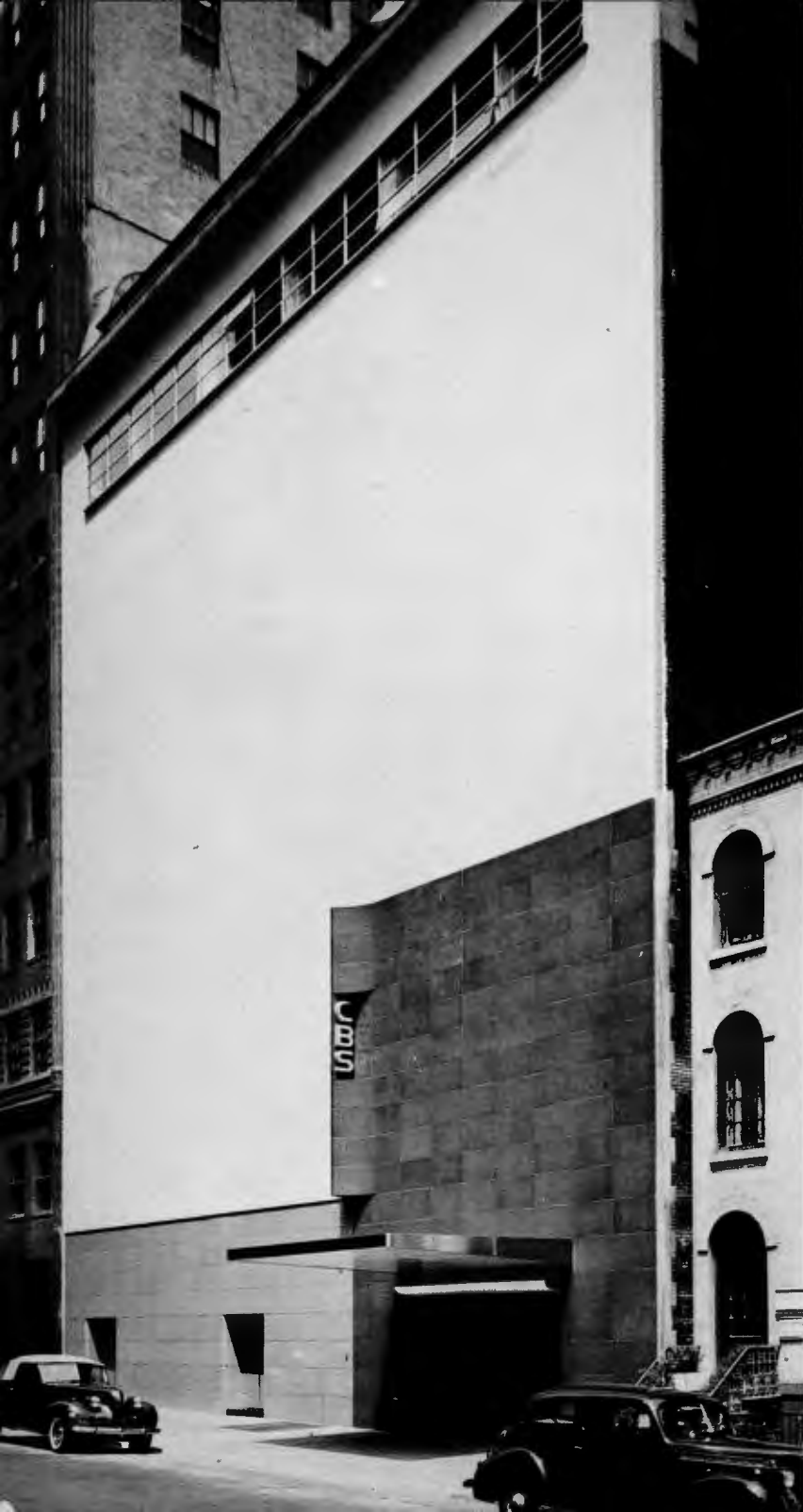
BECTON, DICKINSON & CO.  
SHIPPING BUILDING AND  
ONE OF PRODUCTION BUILDINGS



DETAIL OF ONE OF PRODUCTION BUILDINGS

ONE OF PRODUCTION BUILDINGS





COLUMBIA BROADCASTING SYSTEM, INC., STUDIO BUILDING, NEW YORK CITY

ELMHURST GENERAL HOSPITAL, NEW YORK CITY (CO-ARCHITECTS)



HOFFMANN - LA ROCHE, INC., PHARMACEUTICAL PLANT, NUTLEY, N. J.



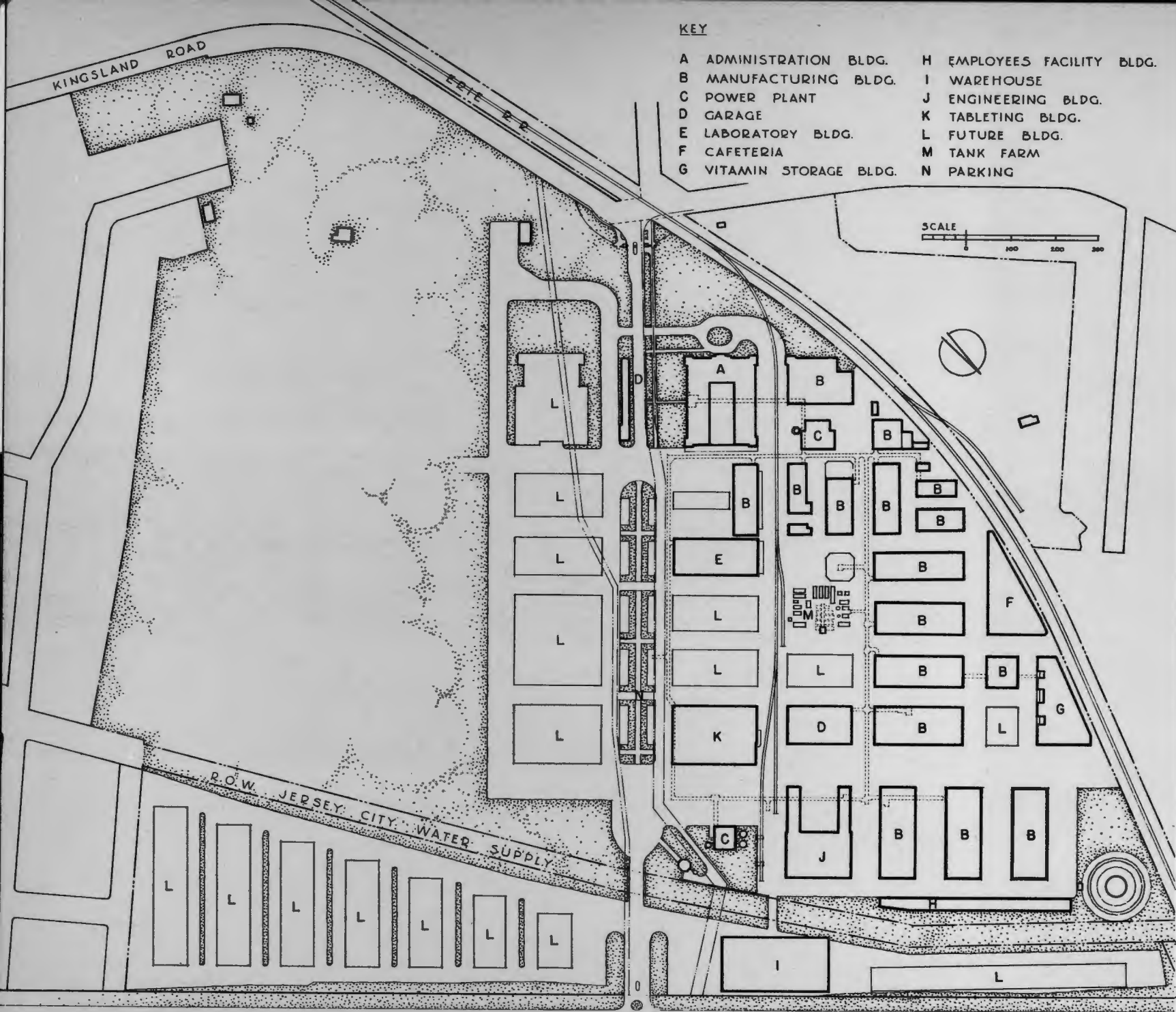
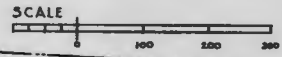
GENERAL VIEW OF PLANT BUILDINGS





KEY

- |                         |                            |
|-------------------------|----------------------------|
| A ADMINISTRATION BLDG.  | H EMPLOYEES FACILITY BLDG. |
| B MANUFACTURING BLDG.   | I WAREHOUSE                |
| C POWER PLANT           | J ENGINEERING BLDG.        |
| D GARAGE                | K TABLETING BLDG.          |
| E LABORATORY BLDG.      | L FUTURE BLDG.             |
| F CAFETERIA             | M TANK FARM                |
| G VITAMIN STORAGE BLDG. | N PARKING                  |



NEW JERSEY HIGHWAY S-3

HOFFMANN-LA ROCHE,  
INC., NUTLEY, N. J.  
SITE PLAN



PRODUCTION BUILDING AND SHOP

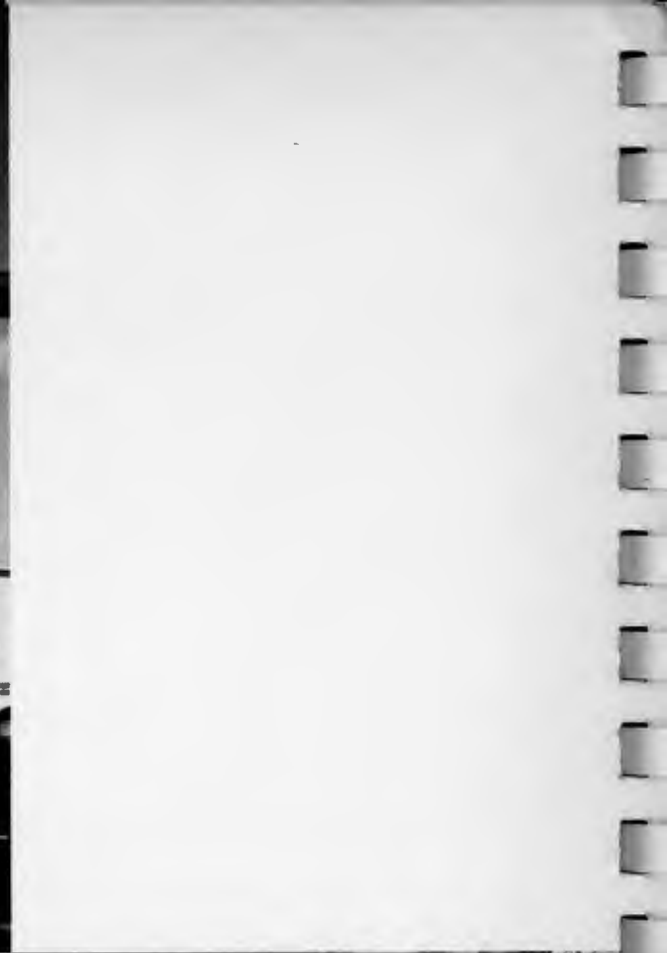
HOFFMANN - LA ROCHE, INC.  
ONE OF MANUFACTURING BUILDINGS  
INTERIOR







HOFFMANN - LA ROCHE, INC., MACHINE SHOP



MACHINE SHOP, INTERIOR



RESEARCH LABORATORY



NEW YORK CITY HOUSING AUTHORITY, ALBANY HOUSES, BROOKLYN, N. Y.

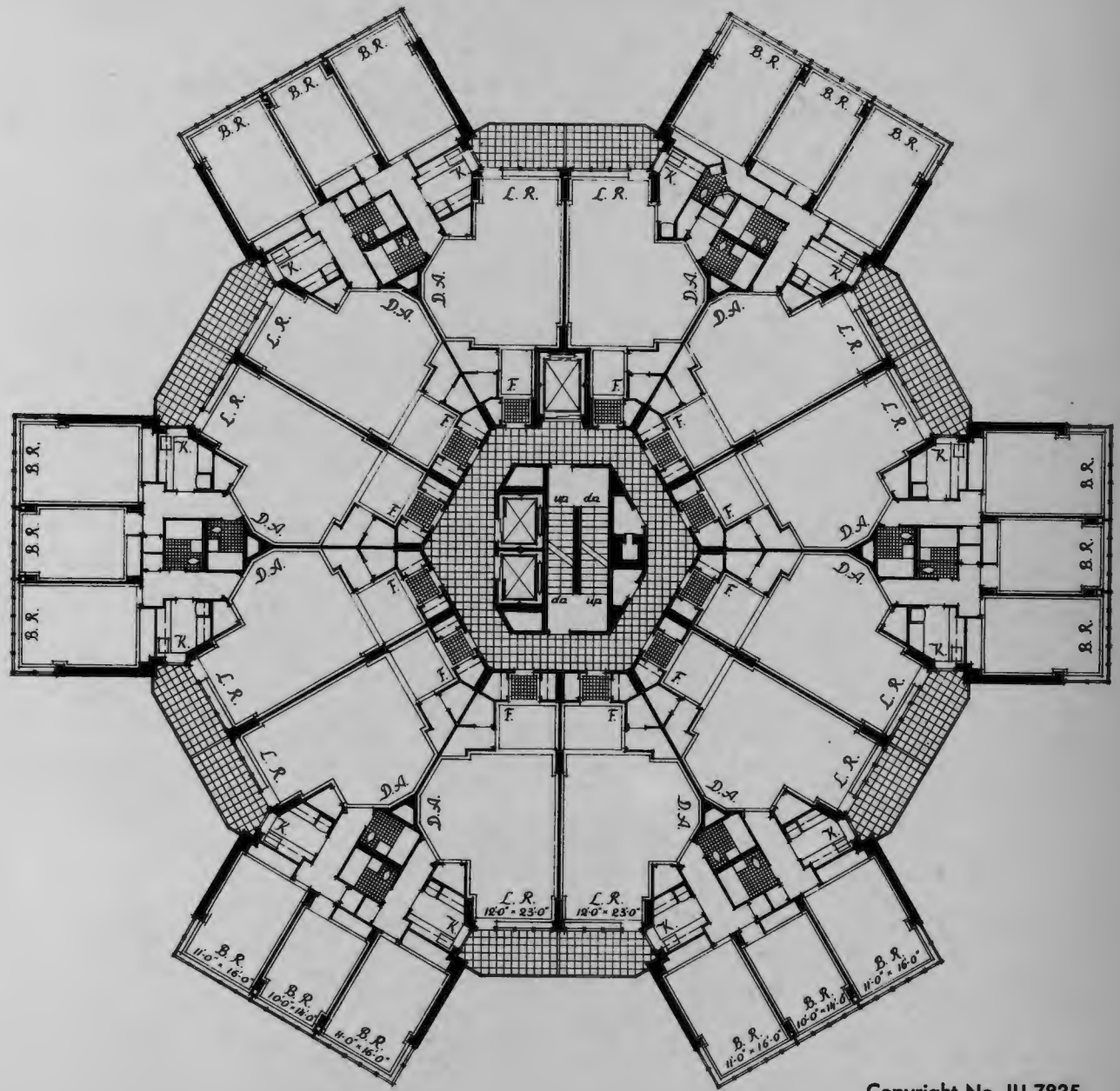
MOUNT VERNON  
HOUSING AUTHORITY,  
MT. VERNON HOUSES,  
MT. VERNON, N. Y.



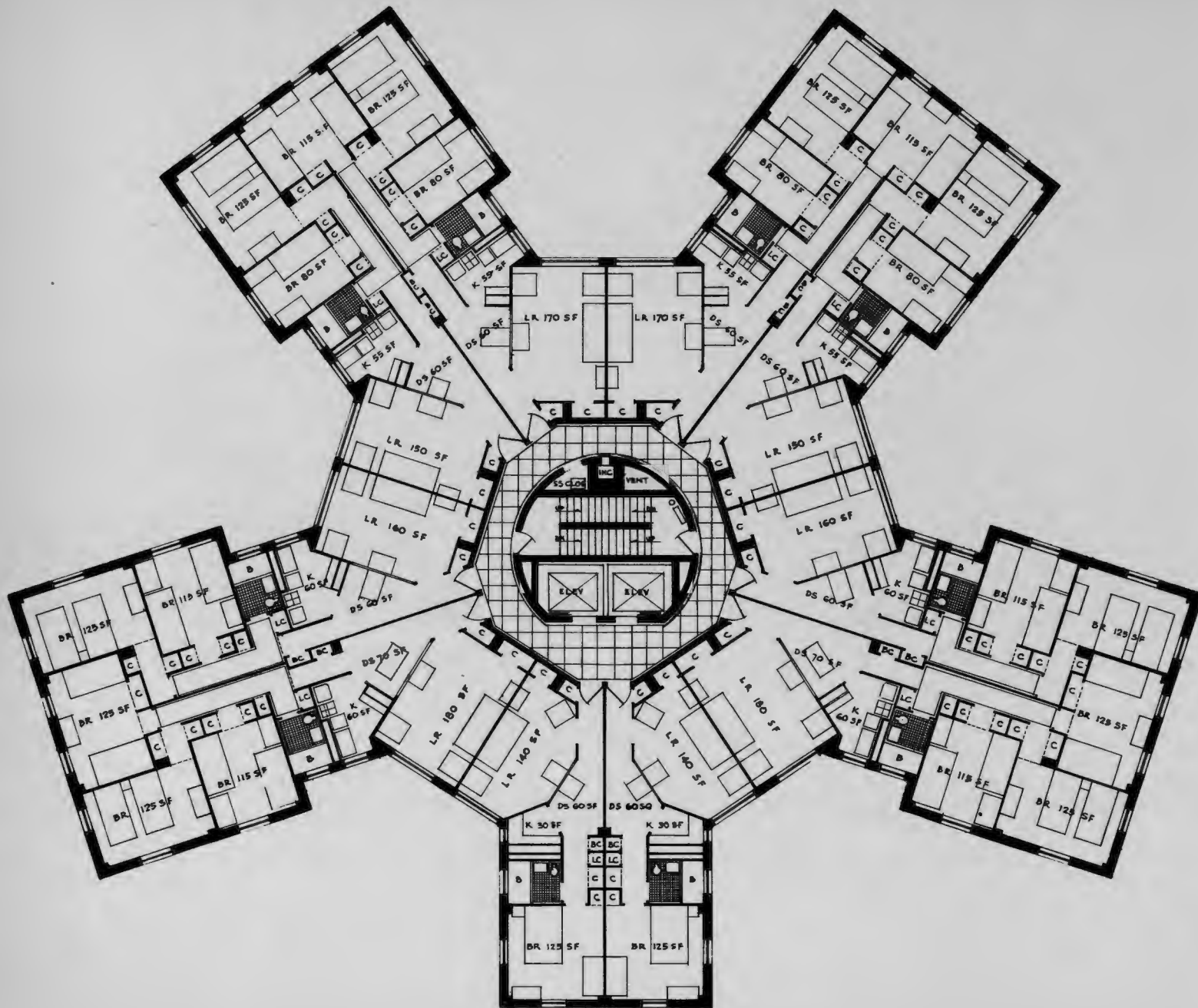




STUDY FOR  
CENTER-CORE  
HEXAGONAL  
MULTIPLE  
DWELLING UNITS



CENTER-CORE HEXAGONAL  
 MULTIPLE DWELLING UNIT  
 TYPICAL FLOOR PLAN





NEW YORK CITY HOUSING AUTHORITY, FARRAGUT HOUSES, BROOKLYN, N. Y.

FARRAGUT HOUSES, ENTRANCE DETAIL



HEMPSTEAD HOUSING AUTHORITY  
PARKSIDE GARDENS  
HEMPSTEAD, L. I., N. Y.

WHITE PLAINS HOUSING AUTHORITY, WINBROOK HOUSES, WHITE PLAINS, N. Y.





ALBANY HOUSES  
TYPICAL APARTMENT BUILDING

PETER A. FRASSE & CO., INC., DISTRIBUTION WAREHOUSE AND OFFICE, LYNDBURST, N. J.







NEW YORK LIFE INSURANCE CO., COMMERCIAL BLOCK WITH THEATRE AND BRANCH BANKS



TRADE BANK AND TRUST CO., NEW YORK CITY



COUNTER DETAIL

QUEENS COLLEGE SCIENCE BUILDING, FLUSHING, L. I., N. Y.



LECTURE ROOM





EXTERIOR VIEW

MAIN ENTRANCE DETAIL



FAIRLEIGH DICKINSON COLLEGE GYMNASIUM AND STUDENT BUILDING, RUTHERFORD, N. J.





AUDITORIUM ENTRANCE LOBBY



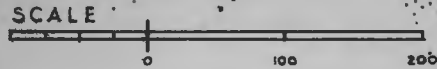
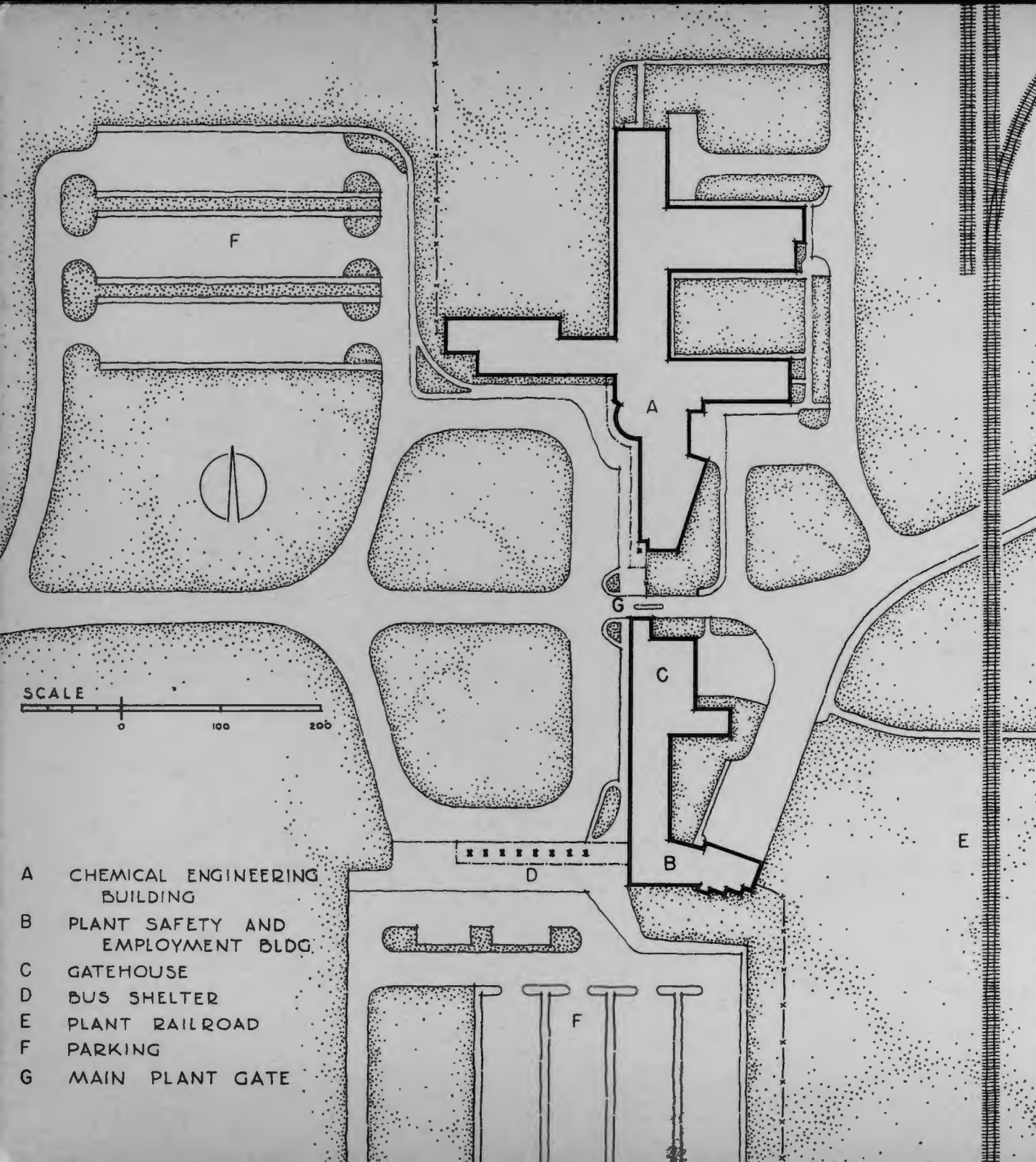
TENNESSEE VALLEY AUTHORITY, CHEMICAL ENGINEERING AND RESEARCH BUILDING, WILSON DAM, ALA.

ENTRANCE LOBBY



PLANT SAFETY AND EMPLOYMENT BUILDING





- A CHEMICAL ENGINEERING BUILDING
- B PLANT SAFETY AND EMPLOYMENT BLDG.
- C GATEHOUSE
- D BUS SHELTER
- E PLANT RAILROAD
- F PARKING
- G MAIN PLANT GATE

TENNESSEE VALLEY AUTHORITY  
 PLANT ENTRANCE WITH  
 CHEMICAL ENGINEERING,  
 PLANT SAFETY, AND  
 EMPLOYMENT BUILDINGS

TYPICAL LABORATORY



STATION WNEW, NEW YORK CITY, CONTROL ROOM



ENTRANCE LOBBY

COLUMBIA BROADCASTING SYSTEM, INC., NEW YORK CITY, STUDIO INTERIOR



HAHNE & CO.  
DEPARTMENT STORE  
MONTCLAIR, N. J.



EXTERIOR VIEW





WARNER-HUDNUT, INC.  
LOBBY OF PLANT  
AND DISTRIBUTION  
WAREHOUSE  
LOS ANGELES, CAL.



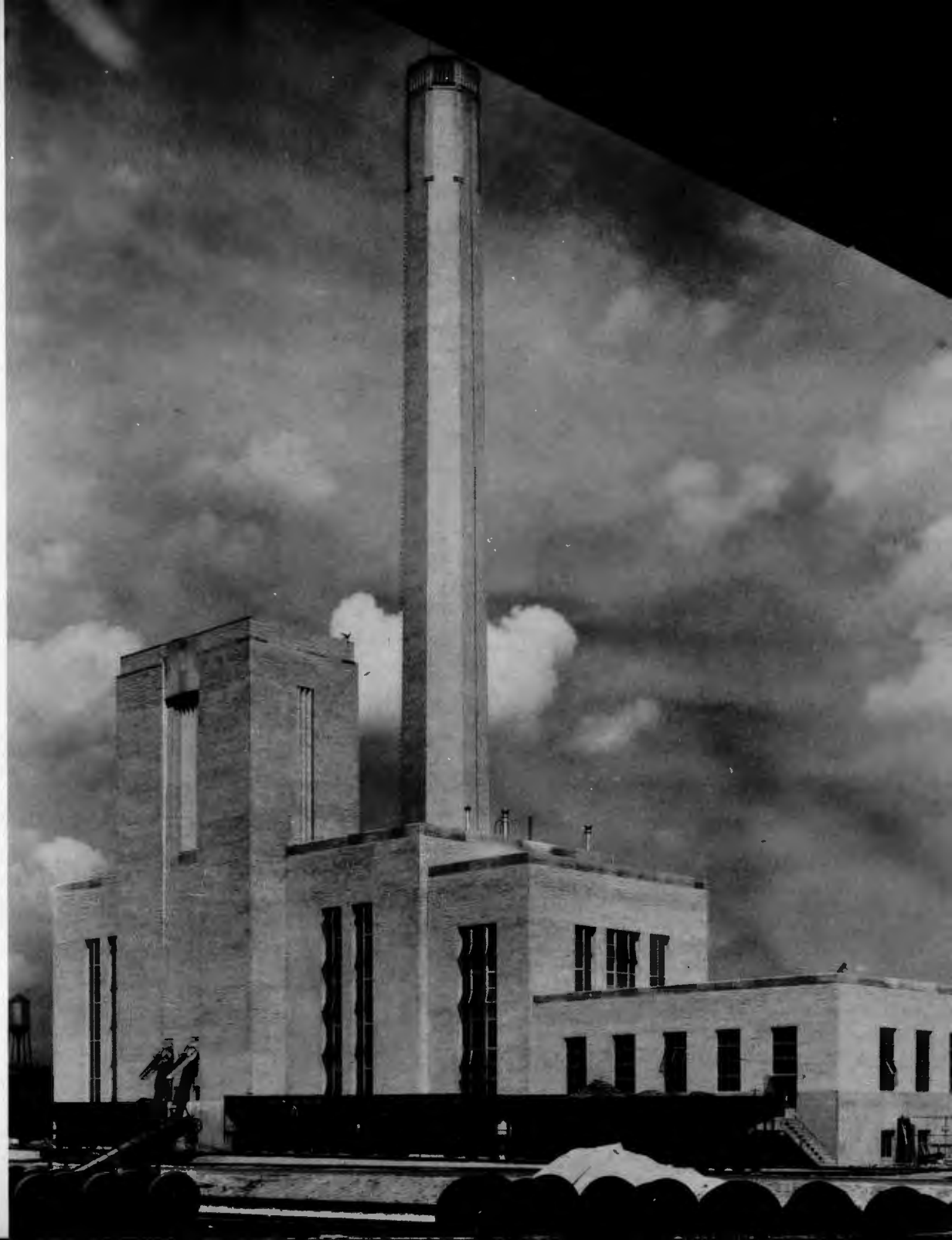
PLAN PROPOSED FOR WASHINGTON NATIONAL AIRPORT





TORONTO, HAMILTON & BUFFALO RAILWAY  
PASSENGER STATION  
HAMILTON, ONT., CANADA

POWER PLANT FOR CINCINNATI UNION TERMINAL  
(CONSULTING ARCHITECTS)





LESLIE APARTMENTS, FOREST HILLS GARDENS, N. Y., GARAGE



LESLIE APARTMENTS  
TERRACE OVER GARAGE



WARNER-HUDNUT, INC., NEW YORK CITY, PRESIDENT'S OFFICE



TOWN HALL, HEMPSTEAD, L. I., N. Y.



TUTTLE ESTATE, GLEN HEAD, L. I., N. Y.

GARAGE AND STABLE



CHICKEN HOUSE



