

May 16, 1978

Ms. Catha Grace Rambusch
15 Cramercy Park South
New York - N.Y. 10003

Dear Ms. Rambusch:

In the recent College of Fellows letter, of March 20, 1978, there was a statement that you requested information on firms started before World War I. My father, Edward C. Bolles, AIA, came here in 1893 and established his own business in 1905.

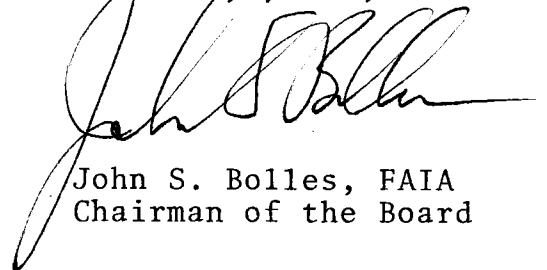
In 1936, I returned to San Francisco and shortly after became his partner. He died in 1940. I carried on the business with the exception of the end of World War II, when I entered into a partnership which lasted ten years.

My son Peter has worked as office boy, as I did before leaving home in 1918, and is now President of the Company.

So there has been three generations continuing the practice here in San Francisco.

Incidentally, at one time, my father was in association with Carl Warnecke where they spent off hours together on the Oakland City Hall. John Carl Warnecke is his son, and I assume well qualified for your list. There are two other family firms you should have listed from California, one is Ernest Kumps of Palo Alto, and the other, A.C. Martin of Los Angeles.

Sincerely yours,



John S. Bolles, FAIA
Chairman of the Board

JSB/r1

JOHN S. BOLLES, FAIA

Born: Berkeley, California

Son of Edward G. Bolles, AIA (First practice in San Francisco, 1893)

B.S. in Civil Engineering 1926, University of Oklahoma
Master in Architecture 1932, Harvard University

Architect-Archaeologist, University of Chicago - Oriental Institute,
Anatolia 1929, Egypt 1930, Persia 1935
Architect for Medieval Academy of America, Cluny, France, Summer of 1930
Architect -Archaeologist, Carnegie Institute of Washington in Mexico 1931-1934
Structural Engineer - H.M. Byllesby Engineering and Management Corporation,
Oklahoma 1926 to 1927
Partner, Edw. G. Bolles, Architect, 1935 to 1940, San Francisco
Own practice, 1940 to 1944, San Francisco
Area Project Engineer, USHA and FPA, 1941-1944
Technical Director, San Francisco Housing Authority, 1944 to 1945
Partnership, Ward & Bolles, 1944 to 1954
Own practice, 1954 to Present

Member, College of Fellows, American Institute of Architects
Member, Stanford Research Institute
Member, Society of Military Engineers
President, State Association of California Architects, 1944
President California Council of Architects, 1945 to 1946
President, Northern California Association of Architects, 1945
Secretary, Northern California Chapter A.I.A., 1945 to 1946
President, San Francisco Federation of Arts, 1949 to 1951
Chairman, San Francisco Building Industry Conference Board, 1949
President, Marin Society of Artists, 1942
Owner, John Bolles Gallery (Contemporary Artists), 1958 to Present
Member, San Anselmo Planning Commission, 1938 to 1941
Chairman, Mayor's Committee for Removal of Temporary War Housing,
San Francisco, 1949 to 1954
Vice President, San Francisco Planning and Housing Association, 1953
Vice Chairman, San Francisco Chamber of Commerce Industrial Committee,
1964 to 1965
Chairman, San Francisco Downtown Association City Planning Committee,
1963 to 1968
Member, San Francisco Downtown Association Board of Directors, 1964
to Present
Recipient of Artists Equity Fine Arts Award, 1952
Chairman, San Francisco Building Industry Code Committee, 1954 to 1955
Chairman of Board, San Francisco Art Association, 1958 to 1961
Director, Civic Federal Savings & Loan Association, 1965 to Present
Director, Bank of Trade (S.F. Chinatown), 1966 to 1968
Director, Corte Madera Shopping Center, 1966 to 1970

Licenses: National Council of Architectural Registration Boards:
California, Ohio, Oregon, Texas, Virginia, Washington

October 9, 1978

Committee for Preservation
of Architectural Records
National Arts Club
15 Gramercy Park South
New York, N.Y., 10003

Dear Committee:

The Architectural firm of Bolles Associates would like to apply for entry in the Directory of Historic American Architectural Firms. We have been operating continuously in San Francisco since 1905. Enclosed please find a descriptive history of the firm and copies of four architectural drawings which were originally done on linen by Edward G. Bolles.

The blue-line print dated 1907 is a structural drawing of a residence designed for Joseph Brandenstein, Esq. The series of three undated drawings, a section, an east elevation and a west elevation, are of the L.B. McMurtry, Esq. residence. We estimate the design was done in 1922.

Please let me know whether we qualify for listing in the Directory. We will happily provide you with additional information as well as prints for reproduction.

Sincerely yours,

BOLLES ASSOCIATES



Ruby Diamond
Marketing and Promotion

Enclosures

HISTORY OF BOLLES ASSOCIATES

Bolles Associates is a design firm representing more than seventy years of architectural, engineering and planning activity in the San Francisco Bay Area and nationwide. The firm offers a full range of services and embodies an ability and reputation developed under the leadership of three generations of Bolles architects.

History of the firm began in 1905 when Edward G. Bolles established a private architectural practice at Portsmouth Square, San Francisco. He specialized in the Beaux Arts style of design applied to residences and small public facilities. Edward's practice flourished following the 1906 San Francisco earthquake when the reconstruction years offered new opportunities for the architectural profession. During this era of intense architectural activity, there existed no organization to represent local architects and to provide a forum for the exchange of ideas. Bolles joined with 19 Bay Area colleagues to form the Architectural Club, a group that met regularly to encourage continuing education for architects and to establish professional standards. Edward Bolles, along with several other charter members of the Architectural Club, was later instrumental in establishing a San Francisco Chapter of the American Institute of Architects.

John Bolles joined his father in 1936 after participating in archeological expeditions in Guatemala, Turkey, France and Mexico. While dividing his time between studies at Harvard University and digs in the Yucatan jungle, John Bolles had developed an approach to design that would profoundly influence his architectural career. He observed that structures designed by the Mayan Indians were expressions of their spiritual life, and he resolved that art, an expression of the sprit of humanity, should be an integral part of architecture, not an addition or an after thought.

John Bolles worked with his father on several structures for the 1939 Golden Gate International Exposition on Treasure Island in San Francisco Bay, most notably the Temple of Religion and Tower of Peace. Following the death of Edward Bolles this same year, John Bolles assumed responsibility for guiding the future course of the firm. In the early 1950's he formed a partnership with J. Francis Ward and expanded the range of architectural services applied to the design of a variety of building types: offices, warehouses, industrial plants, residences, retail stores. John Bolles recognized major technological advances in the construction industry and merged modern methods with traditional architectural standards. The firm of Ward and Bolles was the first to erect concrete structures using the "tilt-up" method of construction and to incorporate artistic expression into these designs by creating sculptures of poured concrete over art forms. The partnership with Ward was dissolved and, in

1958, John Bolles moved his practice to its present Gold Street location. Shortly thereafter, the John Bolles Gallery was established to provide exhibition space for the works of nationally known artists, as well as those from the Bay Area.

Peter P. Bolles joined the firm in 1971 following award of a degree in architecture from Harvard University and six years of professional practice in New England. His work in New England involved documentation and restoration of historic structures, some dating back to the early 1700's. In addition, he acted as a private design consultant, a construction administrator, and as officer and director of a land development company. On the west coast, Peter Bolles worked with his father on improvements to Candlestick Park, the design concept of the Oakland Coliseum and the design program for Barclay's Bank.

In 1975 the firm of Bolles Associates assumed its present organizational form with John Bolles providing overall guidance and Peter Bolles acting as President in charge of day to day operations. Current projects under the supervision of Peter Bolles include the Santa Rosa Shopping Center, Santa Rosa, California; Medic Alert International Headquarters, Turlock, California; and Caesar's World Resort Hotels in Las Vegas, Nevada and Atlantic City, New Jersey.

Today Bolles Associates offers complete architectural and planning services including master planning, urban design, site selection and planning, program development, project design, interior design, production of construction drawings and specifications, construction scheduling and supervision, and renovation of existing structures. Bolles Associates designs structures that combine elements of art and architecture in functional and economical forms. The firm has been recognized with design awards for a variety of industrial, commercial, residential and planning projects including: The Paul Masson Wine Aging Cellars, San Jose, California; Barclays Bank, Santa Ana, California; Anna E. Waden Branch Library, San Francisco, California; 990 Pacific Avenue (retirement housing), San Francisco, California; and Urban Design Concepts for the Yerba Buena Central Blocks, San Francisco, California.

October 26, 1978

Ms. Ruby Diamond
Marketing and Promotion
Bolles Associates
14 Gold Street
San Francisco, CA 94133

Dear Ms. Diamond:

Thank you for your recent letter and the structural drawing you enclosed. We have had some correspondence in the spring with Mr. John Bolles about the history of your architectural firm. Of course, Bolles Associates certainly does qualify for inclusion in our directory which is planned for publication in 1979.

Obviously you do have drawings from before World War I. I wonder what your current policy on retaining drawings is?

We appreciate your interest in our project, and I look forward to hearing from you again.

Faithfully,

Catha Grace Rambusch

CGR:sbt

Architects · Planners · Since 1905

March 9, 1979

Ms. Catha Grace Rambusch
COMMITTEE FOR THE PRESERVATION OF ARCHITECTURAL RECORDS, INC.
15 Gramercy Park South
New York, NY 10003

Dear Ms. Rambusch:

In response to your query regarding our policy on retaining drawings, we have all our architectural drawings filed and retained in the archives of our firm. Some drawings date back to our earliest days, more than 70 years ago.

If you need any additional information, please let me know.

Sincerely,



BOLLES ASSOCIATES

Ruby Diamond
Marketing and Promotion

THE AMERICAN INSTITUTE OF ARCHITECTS ARCHIVES For information or study purposes only. Not to be recopied, quoted, or published without written permission from the AIA Archives, 1735 New York Ave. NW, Washington, DC 20006

Bolles Associates Incorporated

Architects - Planners

Successor to

Edward G. Bolles Architect 1905-1940

John S. Bolles Architect 1940-1944

Ward & Bolles Architects 1944-1954

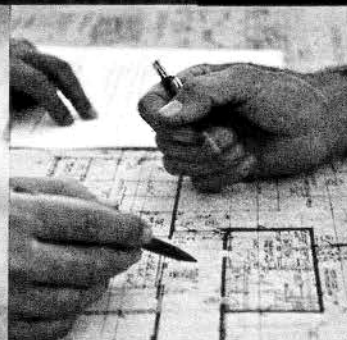
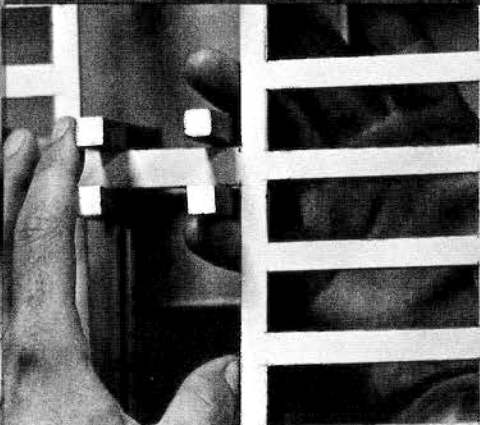
John S. Bolles Associates 1954-1974

Announces a change in organization
with Corporate offices at

14 Gold Street, San Francisco, California 94133



BOLLES ASSOCIATES



THE AMERICAN INSTITUTE OF ARCHITECTS ARCHIVES. For information or study purposes only. Not to be recycled, quoted, or published without written permission from The AIA Archives, 1735 New York Ave. NW, Washington, DC 20006

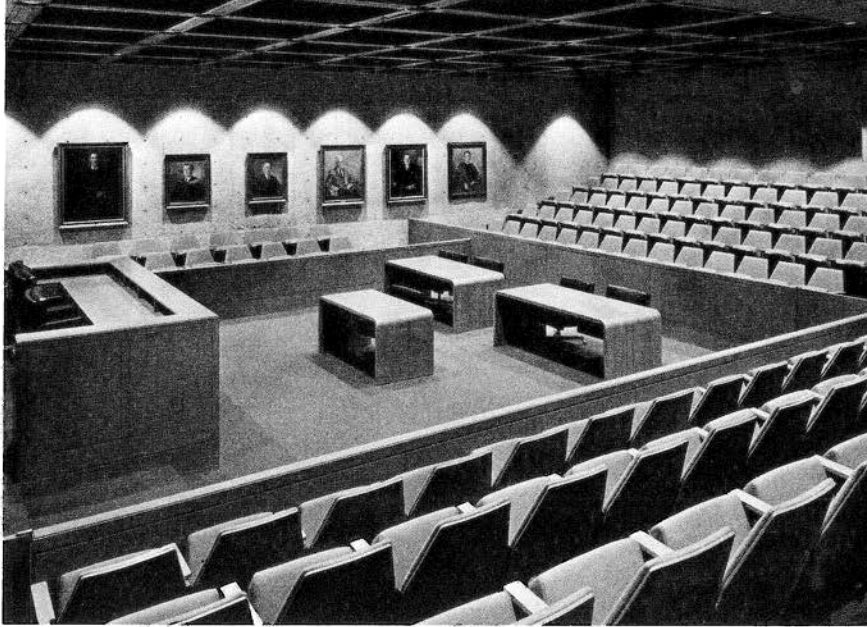


Clockwise from upper left:
**Peter P. Bolles, Richard E. Audsley,
Richard Boghosian, John S. Bolles,
Robert L. Huck, Erwin L. Williams.**

Bolles Associates, incorporated in 1975, is the consolidation of seventy years of architectural, engineering and planning activity. Following the 1906 earthquake, the original office of Edward G. Bolles gained a reputation designing residences and small public facilities. Design and construction of federal projects, including public housing, became the mainstay of John S. Bolles Associates during World War II. In the fifties, the firm capitalized on technological progress in the construction industry and national urban growth when it merged modern construction methods with architectural standards to produce a wide variety of industrial complexes; institutional, educational and recreational facilities; office buildings; residential buildings; retail centers.

John S. Bolles FAIA, now provides overall guidance for Bolles Associates which serves new and continuing clients such as the City and County of San Francisco, IBM Corporation, Paul Masson Vineyards, Macys California, Pacific Telephone and Telegraph, Thomas J. Lipton, Inc., and General Motors. With Peter P. Bolles AIA, acting as president in charge of day to day operations, the firm designs structures that combine elements of art and architecture in functional and economical forms.

Bolles Associates offers a full range of design services including: master planning; urban design; site selection and planning; program development; project design; interior design; production of construction drawings and specifications; construction scheduling and supervision; renovation of existing structures.



Clockwise from the top:

General Motors Assembly Plant, Fremont, California.
Owner—General Motors Corporation. Completed 1973.
3,500,000 SF.

Stanford University Law School, Palo Alto, California.
Owner—Stanford University Interiors completed 1973.
148,000 SF.

Clementina Towers, San Francisco, California. Owner—
San Francisco Housing Authority. Completed 1972.
163,000 SF.



THE AMERICAN INSTITUTE OF ARCHITECTS ARCHIVES. For information or study purposes only. Not to be reproduced without the written permission of the AIA Archives, 1735 New York Ave., N.W., Washington, DC 20006

clockwise from the left:

Macy's Eastridge, Eastridge Shopping Center, San Jose, California. Owner—Macy's California. Completed 1971. 86,000 SF.

Moore Business Forms, Pacific Division Headquarters, Oakland, California. Owner—Moore Business Forms, Inc. Completed 1967. 45,000 SF.

Embarcadero Park II, San Francisco, California. Owner—City and County of San Francisco. Completed 1975. 290,000 SF.

Downtown Plaza, Sacramento, California. Owner—Downtown Plaza Properties. Completed 1972. 261,000 SF.

THE AMERICAN INSTITUTE OF ARCHITECTS ARCHIVES For information or study purposes only. Not to be recycled, quoted, or published without written permission from the AIA Archives, 1735 New York Ave. NW, Washington, DC 20006

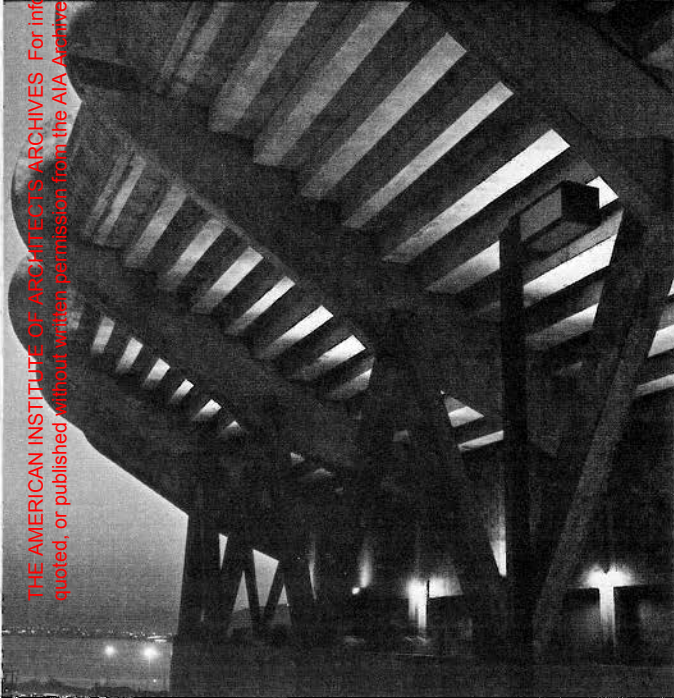


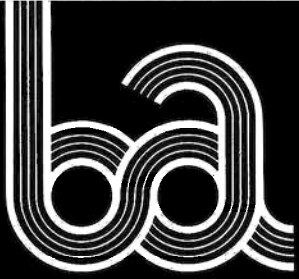
Upper:

IBM Administration Building, San Jose, California.
Owner—IBM Corporation. Completed 1969. 292,000 SF.

Lower:

Candlestick Park, San Francisco, California. Owner—
City and County of San Francisco. Completed 1972.
Capacity 62,500.

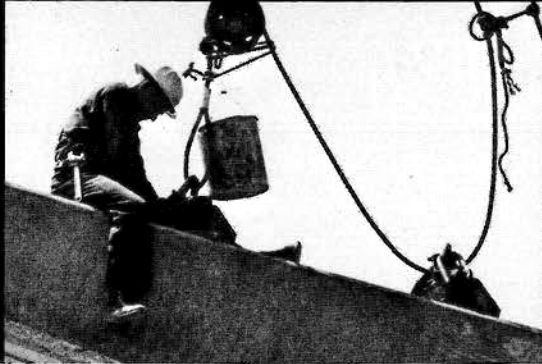




BOLLES ASSOCIATES

Architects and Planners
14 Gold Street/San Francisco, CA 94133
(415) 392-4919

THE AMERICAN INSTITUTE OF ARCHITECTS ARCHIVES. For information or study purposes only. Not to be recycled, quoted, or published without written permission from the AIA Archives, 1735 New York Ave. NW, Washington, DC 20006



February 8, 1980

COMMITTEE FOR THE PRESERVATION OF
ARCHITECTURAL RECORDS
15 Gramercy Park South
New York, New York 10003

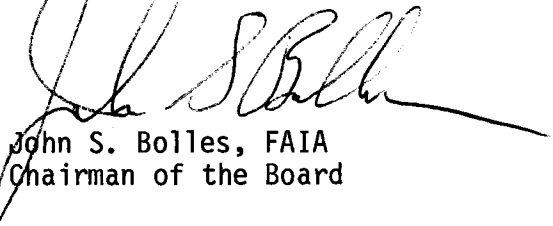
Gentlemen:

Our firm is about ready to acknowledge our 75 years, under Edward G. Bolles, AIA 1905 to 1939, then John S. Bolles, FAIA 1939 to present, and now Peter P. Bolles, AIA. I believe we sent you our information. If not, we can compile this for your next addition.

To my knowledge the oldest firms in California are Albert C. Martin, Los Angeles, John Carl Warnecke, San Francisco, Ernest Kump, then Fresno, San Francisco, and now ?

Sincerely,

BOLLES ASSOCIATES



John S. Bolles, FAIA
Chairman of the Board

JSB/wgm

cc: N. T. Rea
J. B. San Jule