

*Celebrating  
125  
Years*

1889-2014

**MacLachlan  
Cornelius  
& Filoni**

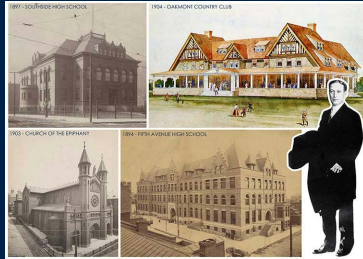
ARCHITECTURE • PLANNING • INTERIOR DESIGN



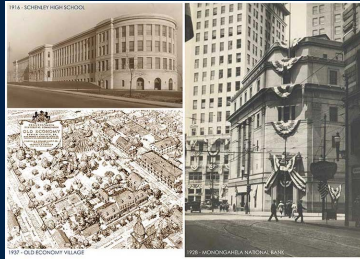
**CELEBRATING**  
125 YEARS OF DESIGN



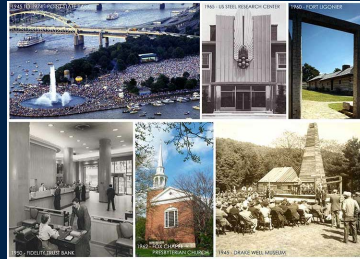
FIRM > HISTORY



1880 - 1910  
A CAREER LAUNCHED



1910 - 1940  
EARLY CENTURY



1940 - 1970  
MID-CENTURY



1970 - 2000  
LATE CENTURY



2000 - PRESENT  
THE NEW MILLENNIUM

FIRM > HISTORY > 1880 - 1910

- 1889** The beginning - Edward Stotz opens an architectural office in Pittsburgh, Pennsylvania.
- 1889** His first project is a new residence for Mr. William Nease on Sherman Avenue in Pittsburgh's North Side, valued at \$10,000.
- 1894** Mr. Stotz designs the \$242,000 Fifth Avenue High School. It is Pittsburgh's first fireproof school.
- 1902** Mr. Stotz designs the Romanesque Revival style Church of the Epiphany for the Diocese of Pittsburgh. Today, the Church of the Epiphany stands as the sole structure spared by urban renewal in Pittsburgh's Lower Hill neighborhood.
- 1904** This year Mr. Stotz designs what will become one of the most famous golf clubhouses in the United States - Oakmont Country Club. It is the site of Golf Association Opens and Professional Golfers' Association Championships.
- 1909** Mr. Stotz designs St. Mary's Convent in Oakland, Pennsylvania, the new mother-house for the Pittsburgh Sisters of Mercy. The Sisters of Mercy have used their convent continuously ever since.



1897 - SOUTHSIDE HIGH SCHOOL



1904 - OAKMONT COUNTRY CLUB



1903 - CHURCH OF THE EPIPHANY



1894 - FIFTH AVENUE HIGH SCHOOL



**1880 - 1910**  
A CAREER LAUNCHED

1880  
TO  
1910

1910  
TO  
1940

1940  
TO  
1970

1970  
TO  
2000

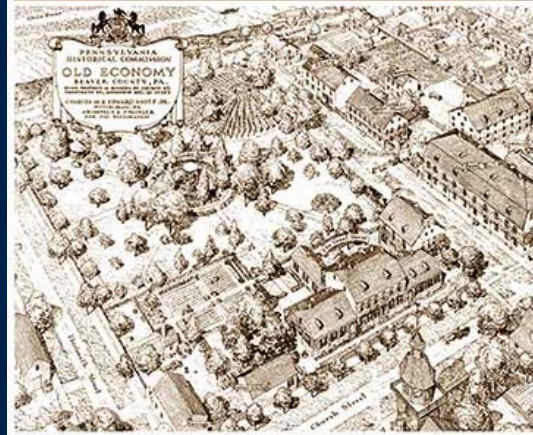
2000  
TO  
PRESENT

FIRM > HISTORY > 1910 - 1940

- 1915** A highlight of his career, Mr. Stotz opens the new Schenley High School. The school is among the first ten high schools in the United States.
- 1917** Edward Stotz, Jr., civil engineering graduate of Lehigh University, joins the office with his father.
- 1923** Mr. Stotz's son, Charles, joins the family firm after earning a Masters of Architecture from Cornell University.
- 1925** The success of Mercy Hospital's School of Nursing (founded in 1893) calls for a much larger nurse's home.
- 1928** The firm designs a new two-story main banking room for the Monongahela National Bank
- 1929** Merchants, Edgar and Oliver Kaufmann, retain the firm to design a large addition to the Irene Kaufmann Settlement, one of the largest social settlements in the country.
- 1936** Edward Stotz retires. The firm becomes a partnership known as Charles M. and Edward Stotz, Jr.
- 1937** James K. Hess, architecture student of Carnegie Institute of Technology, joins the firm. The firm is awarded the State-funded restoration of Old Economy.



1916 - SCHENLEY HIGH SCHOOL



1937 - OLD ECONOMY VILLAGE



1928 - MONONGAHELA NATIONAL BANK

1910 - 1940  
EARLY CENTURY

1880  
TO  
1910

1910  
TO  
1940

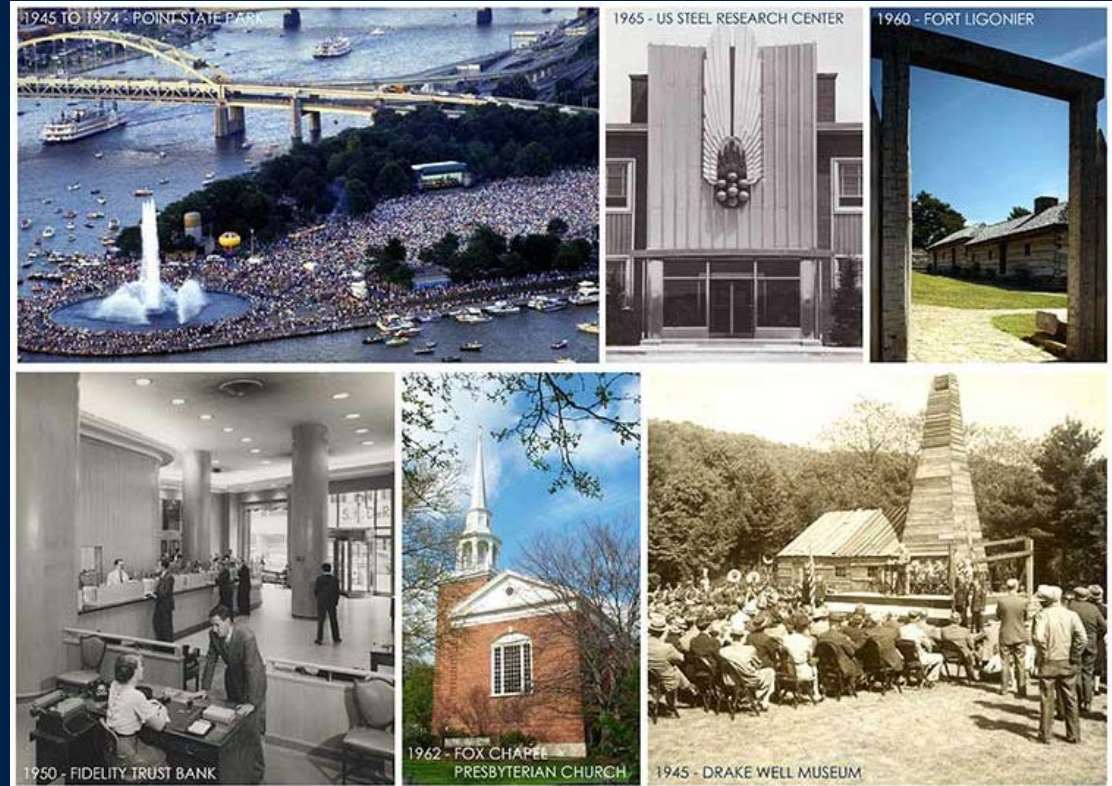
1940  
TO  
1970

1970  
TO  
2000

2000  
TO  
PRESENT

FIRM > HISTORY > 1940 - 1970

- 1941** Louis R. Fosner graduates from Carnegie Institute of Technology's School of Architecture and is hired by Charles M. and Edward Stotz, Jr.
- 1942** With landscape architect Ralph E. Griswold, bridge designer George S. Richardson, and traffic engineer Donald M. McNeil, the firm begins work on the Point Park Development Study for the Regional Planning Association.
- 1947** Donald L. MacLachlan, graduate of Carnegie Institute of Technology's School of Architecture, begins his career with the Stotz firm.
- 1950** Clare Cornelius, still attending Carnegie Institute of Technology, comes to work for Charles and Edward Stotz.
- 1955** At Fort Ligonier, restoration begins on a room from the 1790's home of Revolutionary General Arthur St. Clair. The ceiling displays molding cut by George Washington's cabinetmaker.
- 1962** Ground is broken for the Fox Chapel Presbyterian Church
- 1963** A NEW NAME. Edward Stotz, Jr., suffering from diabetes, retires. Charles M. Stotz invites James K. Hess and Donald L. MacLachlan to become his partners, and the firm becomes Stotz, Hess & MacLachlan.
- 1969** The Pittsburgh Symphony Society asks Stotz, Hess & MacLachlan to convert a 42 year old movie palace, Loew's Penn Theater, into an all purpose hall for symphony, light opera and ballet performances.



1940 - 1970  
MID-CENTURY

1880  
TO  
1910

1910  
TO  
1940

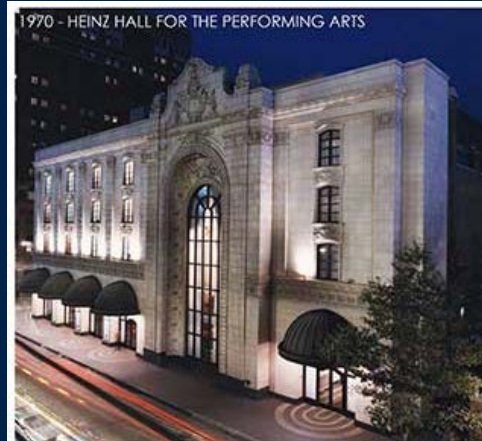
1940  
TO  
1970

1970  
TO  
2000

2000  
TO  
PRESENT

FIRM > HISTORY > 1970 - 2000

- 1971 A NEW NAME. Charles M. Stotz retires and Louis R. Fosner is invited to become a principal. The name of the firm is changed to Stotz, Hess, MacLachlan and Fosner.
- 1977 The Pittsburgh Symphony Society and the people of Pittsburgh receive a gift from the Howard Heinz Endowment to create an urban park. This urban park has become one of the most utilized open spaces in the City of Pittsburgh. Louis Fosner, together with landscape architects Hanna-Olin, designs the plaza. When Louis Fosner dies in 1981, Donald MacLachlan, Albert Filoni, and Ken Lee finish the plaza.
- 1979 A NEW NAME. With the retirement of James K. Hess, the firm name changes to MacLachlan & Fosner.
- 1980 Albert L. Filoni, a graduate of Bethany College and of the Harvard University Graduate School of Design (M. Arch with distinction), joins MacLachlan & Fosner.
- 1982 A NEW NAME. Donald MacLachlan, retiring, invites Clare Cornelius and Albert Filoni to be principals in the firm, which is renamed MacLachlan, Cornelius & Filoni (MCF).
- 1982 Grace Phillips Johnson Visual Arts Center at Bethany College Opens: "With this building I feel I have vindicated the art department," comments Mr. Filoni. "When I was an art student at Bethany, we were down in the basement in one or two rooms. Now we have taken over the old gym - with its tower at the near center of the two main axes of the campus."
- 1984 MCF completes a master plan for Mercy Hospital of Pittsburgh and designs major additions.
- 1985 MCF designs the pagoda at Kennywood Park. The pagoda's structural assemblage of interlocking timbers is based on Oriental building techniques, yet also reminds viewers of Kennywood's famous roller coasters. The pagoda's 65-foot spire serves as an orientation point for visitors.
- 1987 Benedum Center for the Performing Arts for the Pittsburgh Cultural Trust. To enrich the effectiveness of the world-class performing arts center, the stage was expanded to over 10,000 sf and a new support building was added to house dressing rooms, rehearsal rooms, the Green Room, offices, a scenery shop and mechanical equipment rooms.
- 1991 MCF completes a master plan and south wing expansion for Sewickley Valley Hospital.
- 1993 MCF was entrusted with the responsibility of restoring the Shadyside Presbyterian Church.



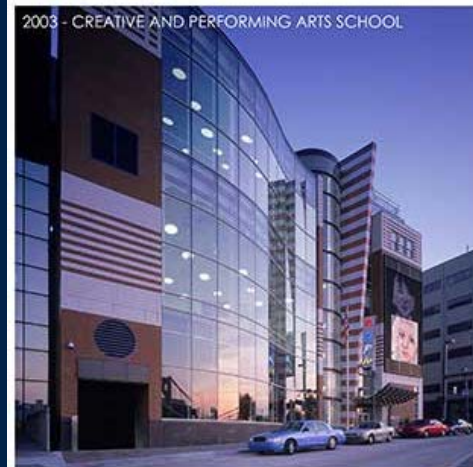
1970 - 2000  
LATE CENTURY

1880 TO 1910	1910 TO 1940	1940 TO 1970	1970 TO 2000	2000 TO PRESENT
--------------------	--------------------	--------------------	--------------------	-----------------------

FIRM > HISTORY > 2000 - PRESENT

- 2000** MCF designs a new creative and performing arts high school for the Pittsburgh School District. In 2009 the firm designs an addition to the school adding space for a middle school.
- 2004** Clare Cornelius, with MCF since 1950 and a principal since 1982, retires from the firm. He is appointed an Emeritus Board Member.
- 2007** MCF's master plan for the Carrie Furnace site, an abandoned blast furnace facility in Rankin, Pennsylvania wins the Columbia Gas People's Choice Award at the Pittsburgh AIA Awards.
- 2009** Schenley High School, completed in 1916 by our founder Edward Stotz, wins the Timeless Award by the Pittsburgh Chapter of the AIA.
- 2011** MCF completed a fine arts master plan for St. Lawrence University. Phase III involved the completion of the Peterson-Kermani Performance Hall. The Alexander String Quartet sings its praises saying - "As we played our first notes in the hall, I thought: it's like the first notes ever played on a beautiful Strad that will give joy to this place for years to come."
- 2012** Work is completed on the Scot Center at the College of Wooster. The roof of this building contains a 20,000 square foot solar array, the largest on any college facility in the United States. It will generate enough electricity to power one of Wooster's residence halls.

The recently-completed LEED® Gold Certified Dupré Science Pavilion at Saint Vincent College opens. Dr. Neil deGrasse Tyson, Director of the Hayden Planetarium in New York City, states - "I am particularly impressed by the facility's innovative design elements -- inspired by science and math themes -- alongside its multi-use labs where different sciences can cross-pollinate their methods, tools, and ideas toward a greater understanding of the physical world. The country needs this right now."



2003 - CREATIVE AND PERFORMING ARTS SCHOOL



2012 - SIS & HERMAN DUPRÉ SCIENCE PAVILION



2011 - PETERSON-KERMANI PERFORMANCE HALL



2011 - HARRIET B. WICK CHAPEL



2012 - SCOT CENTER

**2000 - PRESENT**  
THE NEW MILLENNIUM

1880 TO 1910	1910 TO 1940	1940 TO 1970	1970 TO 2000	2000 TO PRESENT
--------------------	--------------------	--------------------	--------------------	-----------------------