



THE WARREN HOLMES AND KENNETH BLACK COMPANY

ARCHITECTS - ENGINEERS - PLANNERS

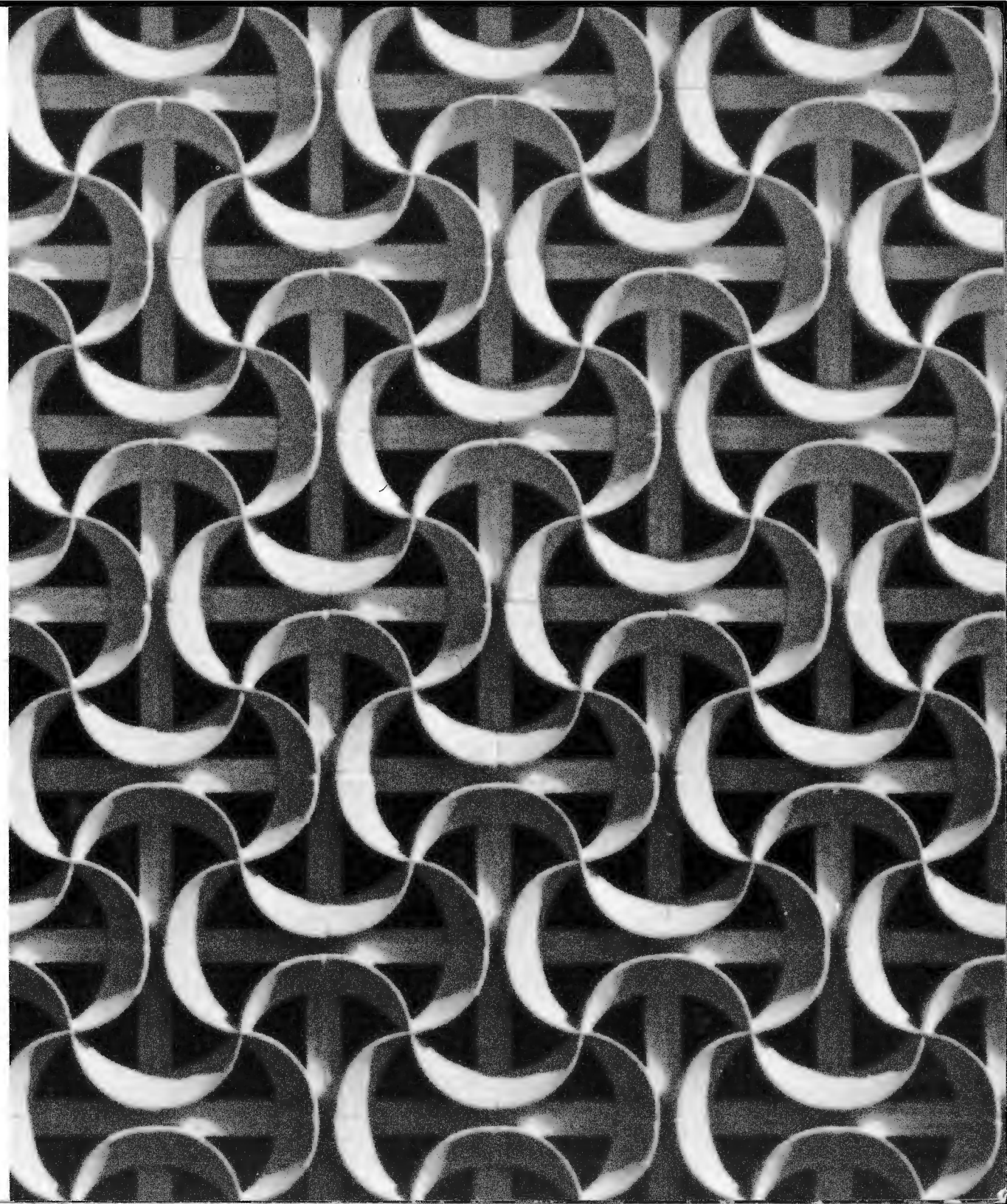
WHO WE ARE

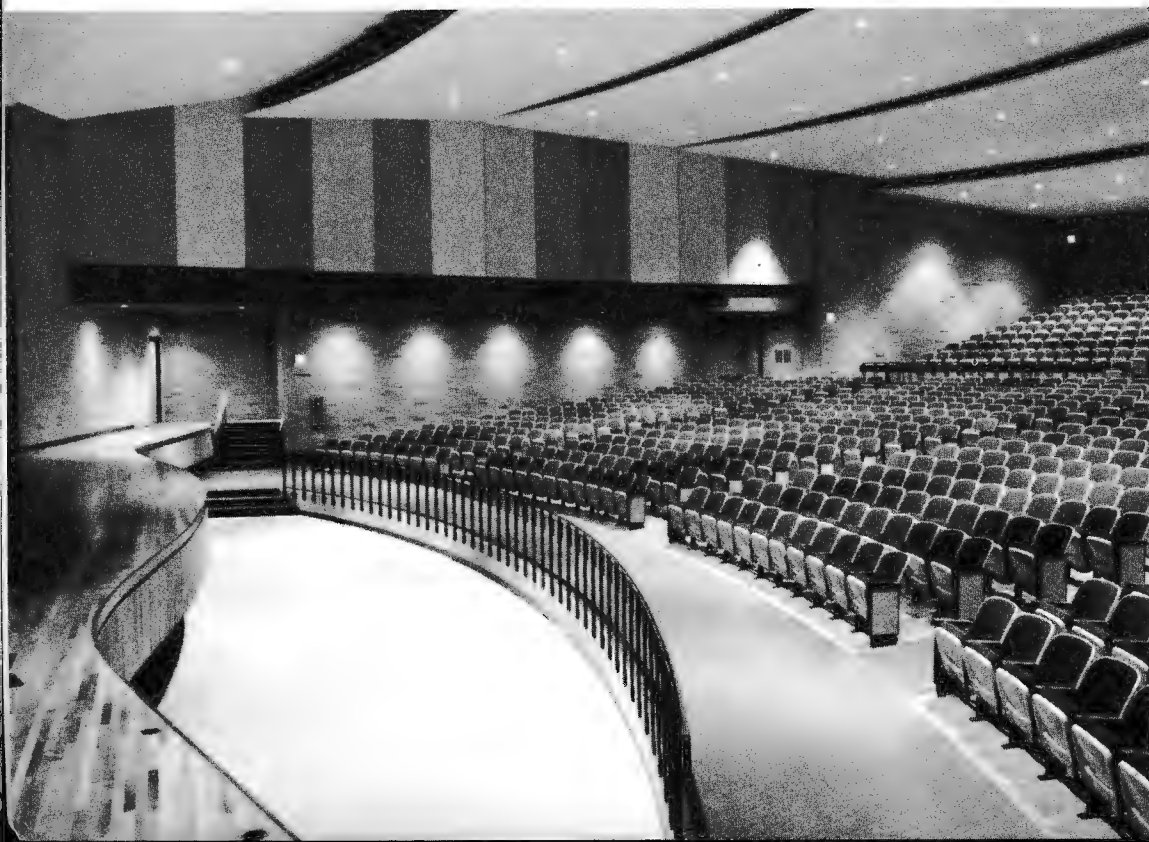
We are a full service planning organization resulting from a merger, effective January 1, 1973, of two of Michigan's oldest architectural and engineering firms.

Kenneth C. Black's office was founded in 1913 and conducted a general practice with emphasis on university buildings, hospitals, health facilities, research laboratories, banks, public buildings and commercial, industrial, institutional and special purpose structures.

Warren S. Holmes opened his office in 1920 and immediately began to specialize in the planning and design of educational facilities. His firm soon became nationally recognized as an authority on the subject. It has consistently maintained its position as a leader in that field, having received many awards and citations for its work. In recent years the firm has broadened its operations to include a wide variety of other work for both public and private clients.

The merger enables us to present a combined background of over 110 years of distinguished accomplishment in all phases of planning and construction.





WHAT WE DO

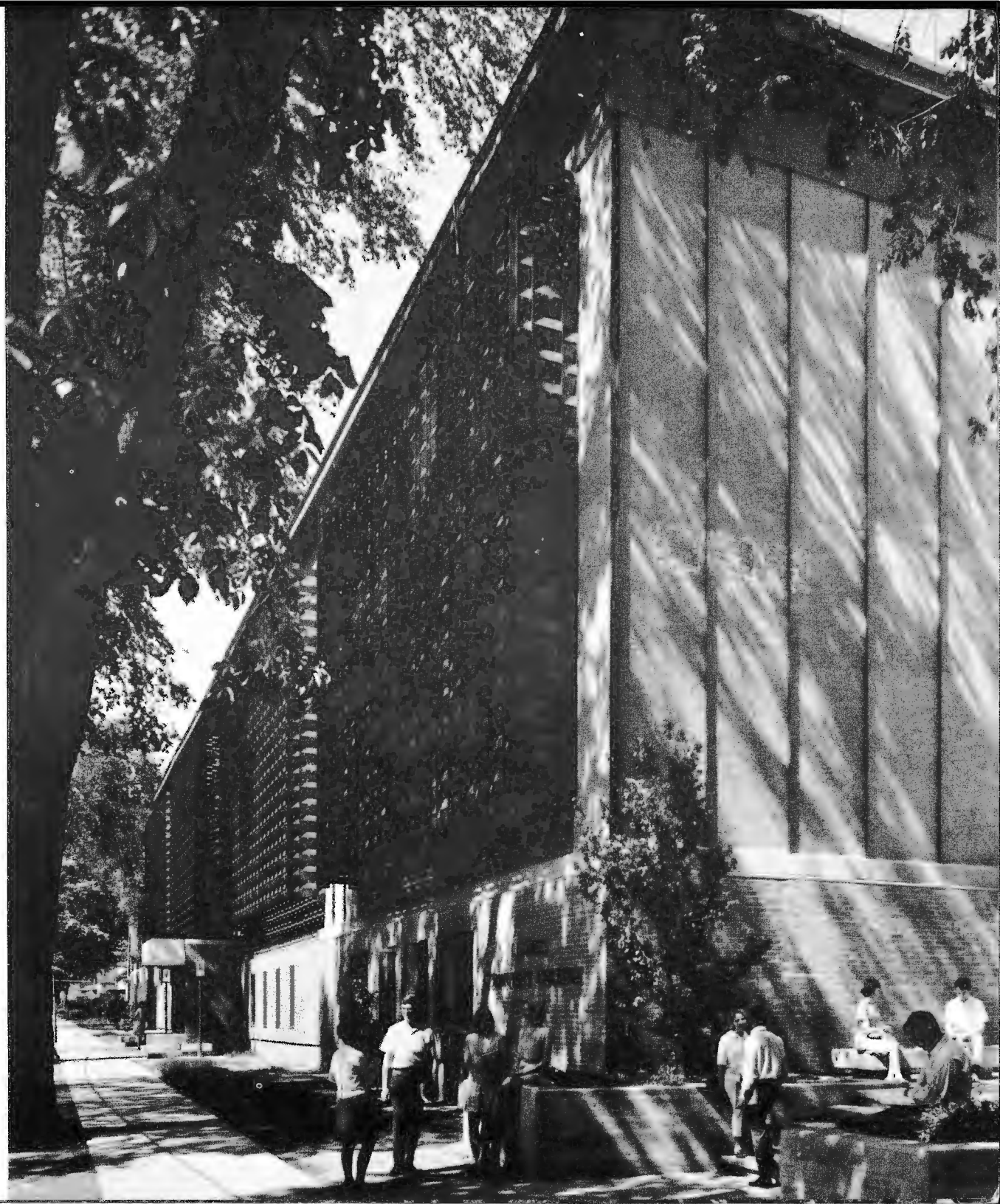
We perform professional architectural, engineering and planning services. Our "in-house" capabilities include architectural planning and design; educational surveys; land and landscape planning; interior decorating and furnishing; structural, mechanical and electrical engineering. We also provide specialized engineering services for acoustical work, food service, materials handling, elevator, fire protection, outside utilities and special equipment.

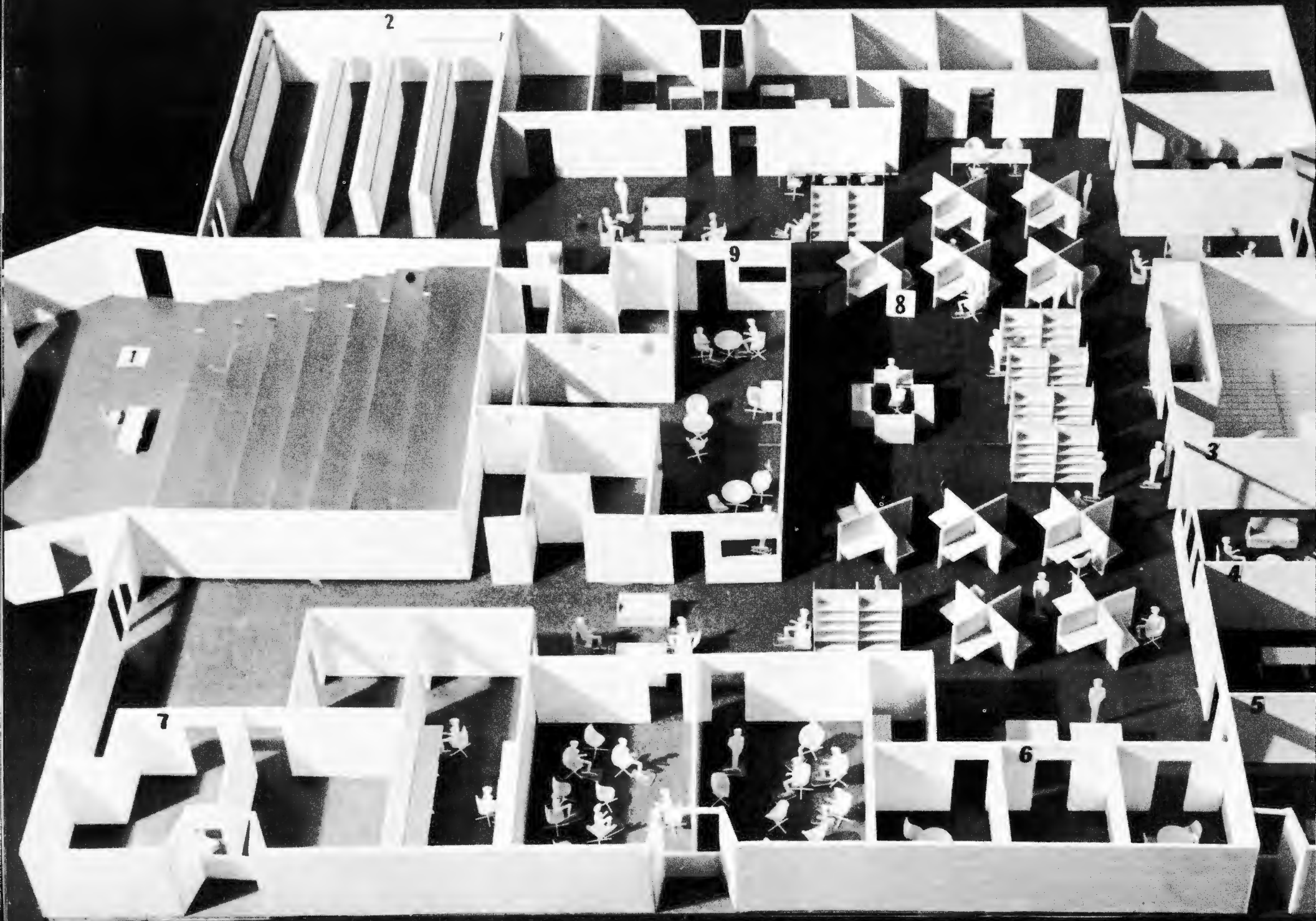
Beginning with assistance in the preparation of feasibility studies, computer programming, site selection, land planning and financing, we continue with the preparation of schematic drawings, design development details and construction drawings and specifications. For many of our clients we assume responsibility for interior planning and design including graphics, the selection of all materials and colors, and the planning, selection, specifying and receiving of bids for equipment, furniture, furnishings and accessories.

We are prepared to provide construction management services to expedite the building process for those clients to whom speed in planning and construction is of primary importance.

Partial services are available to clients whose projects do not require the full range of services outlined above.

All technical aspects of our services conform to the latest standards of professional practice as issued by the American Institute of Architects.





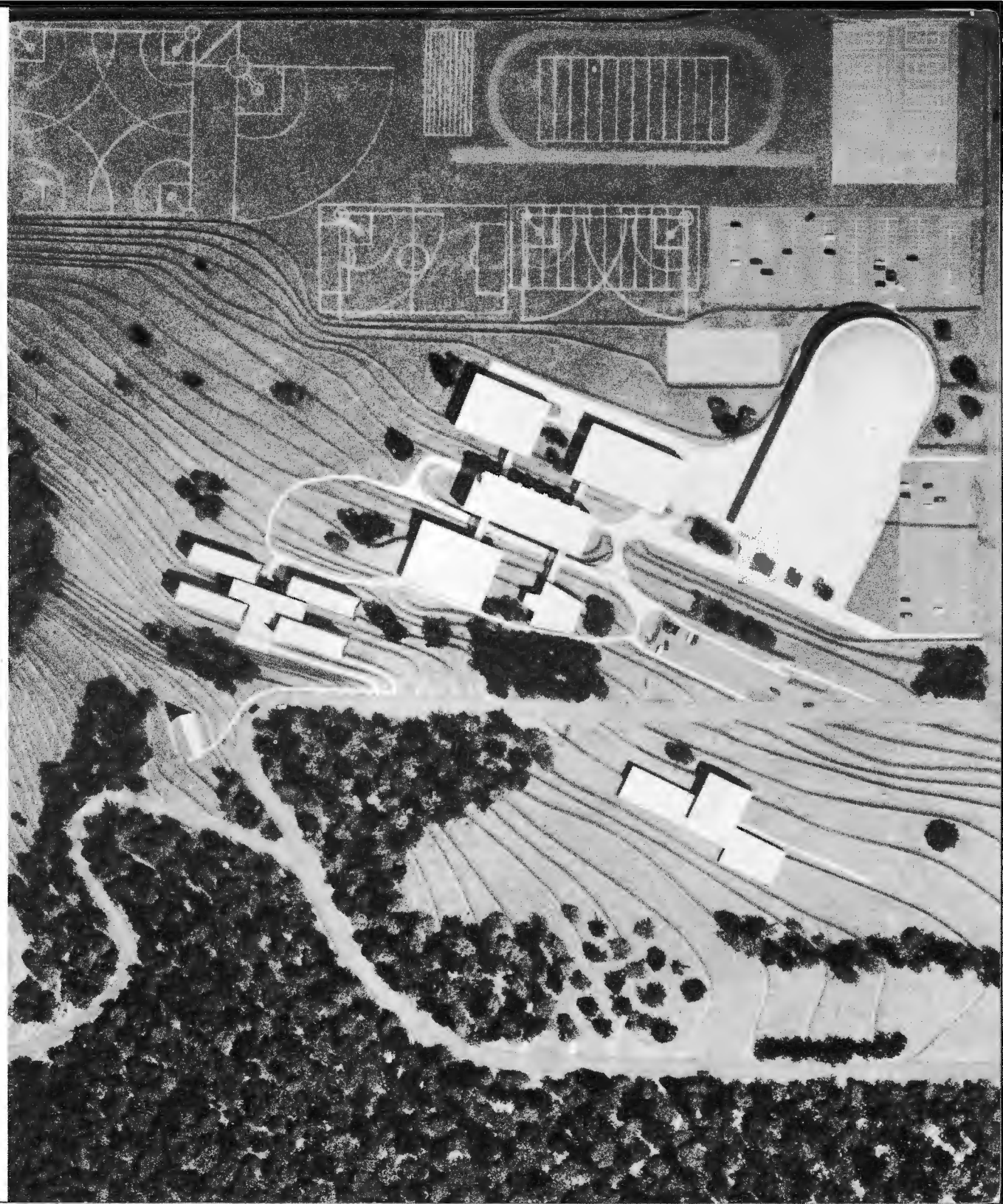
HOW WE DO IT

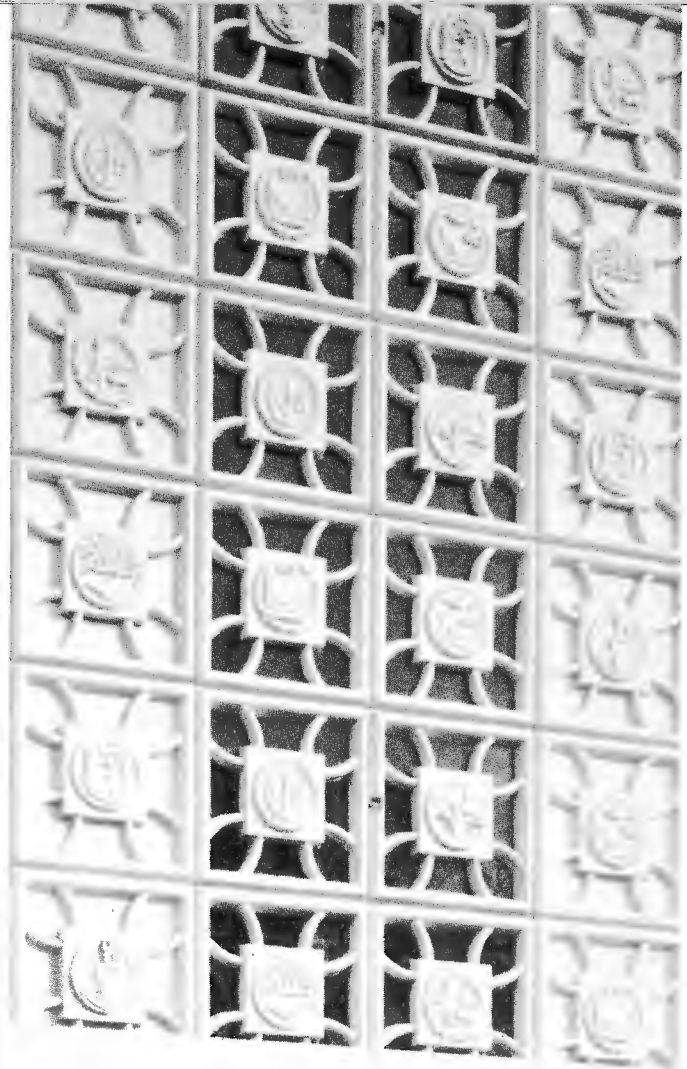
Each project is assigned to a registered architect, engineer or landscape architect who is either a director or associate of our firm. He acts as the coordinator between our office and the client and exercises control of the project from start to finish.

He assembles a team of experts from our staff representing all disciplines required for a proper solution to our client's planning and construction problems. If any particular phase of the problem demands specialized knowledge not available from members of our staff, outside consultants of proven capabilities are brought in so that their skills will supplement our own. On school projects our educational consultant is always available as a member of the team and where the project is to be built by the construction management method the construction manager will act as advisor.

During the planning process this team works in close collaboration with the client's designated representatives to assure a well rounded and thoroughly understood solution to every problem posed by the program.

After the award of contracts, shop drawings for the various trades are reviewed by the appropriate members of the planning team and experienced personnel from our field staff make periodic visits to the construction site to observe and report on work in progress. Full time field services are available on large projects.





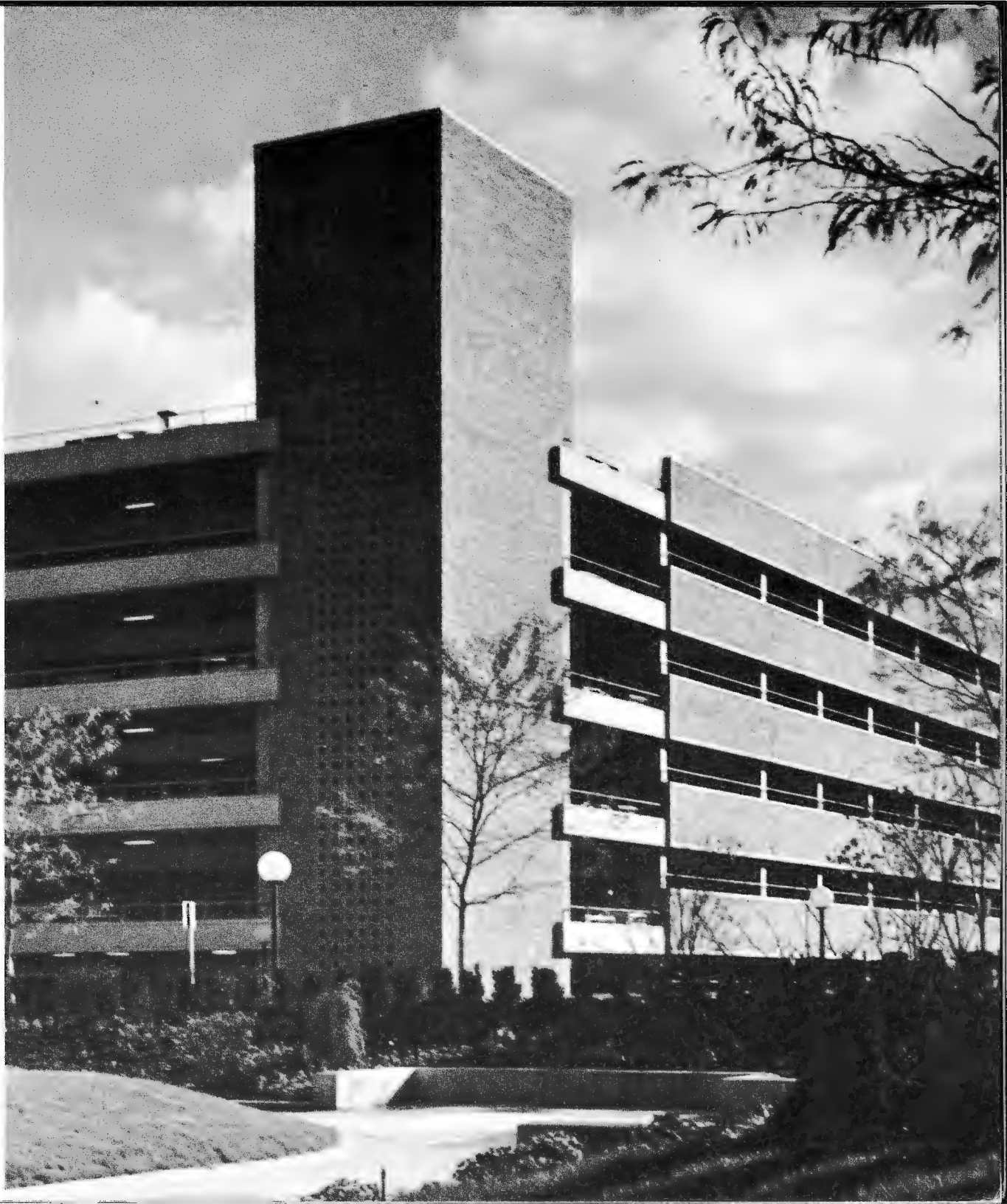
WHAT WE HAVE DONE

We have completed work for hundreds of clients from the Mississippi to New England, including the United States Government; the State of Michigan; counties, cities, townships and villages; a large number of local and intermediate school districts; several community colleges and universities.

Our background includes a long list of hospitals and public health facilities; laboratories and research buildings; libraries; churches; housing projects; private clubhouses; athletic buildings; commercial and industrial structures such as office buildings, banks, parking decks, factories and warehouses; and special purpose buildings such as Observatories, a Cyclotron Building, Water Conditioning Plant and Sewage Treatment Plant.

Master planning projects include campus planning, site surveys and detailed planning for parks, housing developments, athletic fields, etc.

Specific lists of projects and the names of former clients in any category will be furnished to prospective clients who would like to have such information for review in connection with their proposed programs.





In Association with Dantel L. Dworsky

WHAT WE ARE DOING

HEALTH RELATED FACILITIES

Gratiot Community Hospital, Alma,
Michigan
United States Government.
Dept. of Agriculture, Research Facility
University of Michigan Medical Center
Turner Gerontology Center
Parkview Center Renovations

LAND and MASTER PLANNING

Diversified Development Corporation
Farm Bureau Insurance Company
Lansing Community College
Moore Non-Profit Housing Corporation
Pottersville Board of Education

EDUCATIONAL SURVEYS

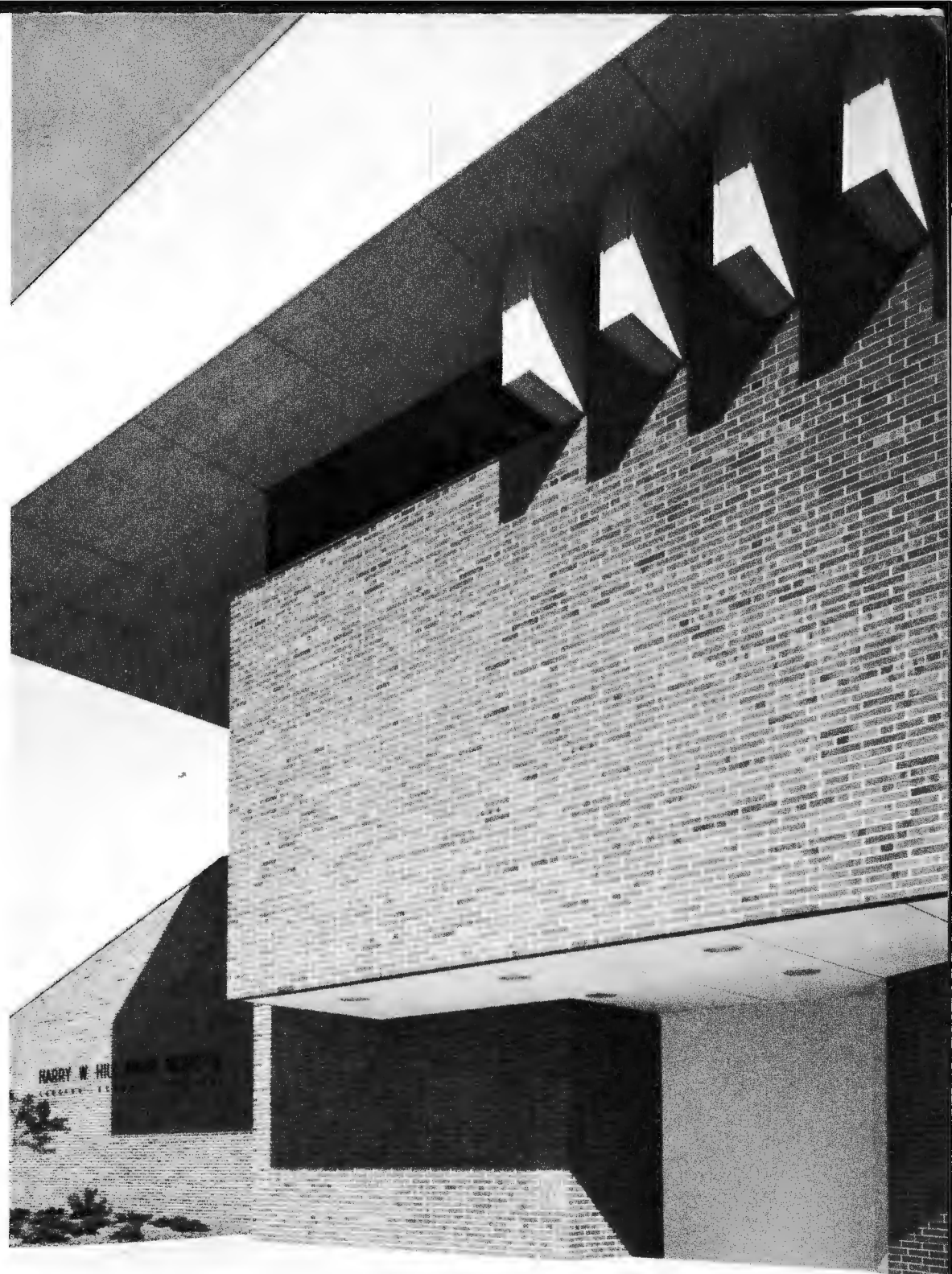
Dowagiac School District Okemos School District
Holt School District Scottville School District
Wisconsin Rapids, Wis , Schools

COMMERCIAL and PUBLIC BUILDINGS

Bank of Commerce of Lansing
Bank of Lansing
Delta County Office Complex
Foster, Lindemer, Swift & Collins
Michigan National Bank
Motor Wheel Credit Union
State of Michigan
Department of Administration
Department of Agriculture
Housing Development Authority
United States Government.
Corps of Engineers
Department of Agriculture

EDUCATIONAL FACILITIES

Bay de Noc Community College Lansing School District
Cass City School District Lapeer School District
Charlotte School District Marquette School District
Gladstone School District Michigan State University
Gogebic Community College Niles School District
Grand Blanc School District Tecumseh School District
Hammond, Indiana, School District Troy School District
Ingham Intermediate School District Ypsilanti School District
Lansing Community College









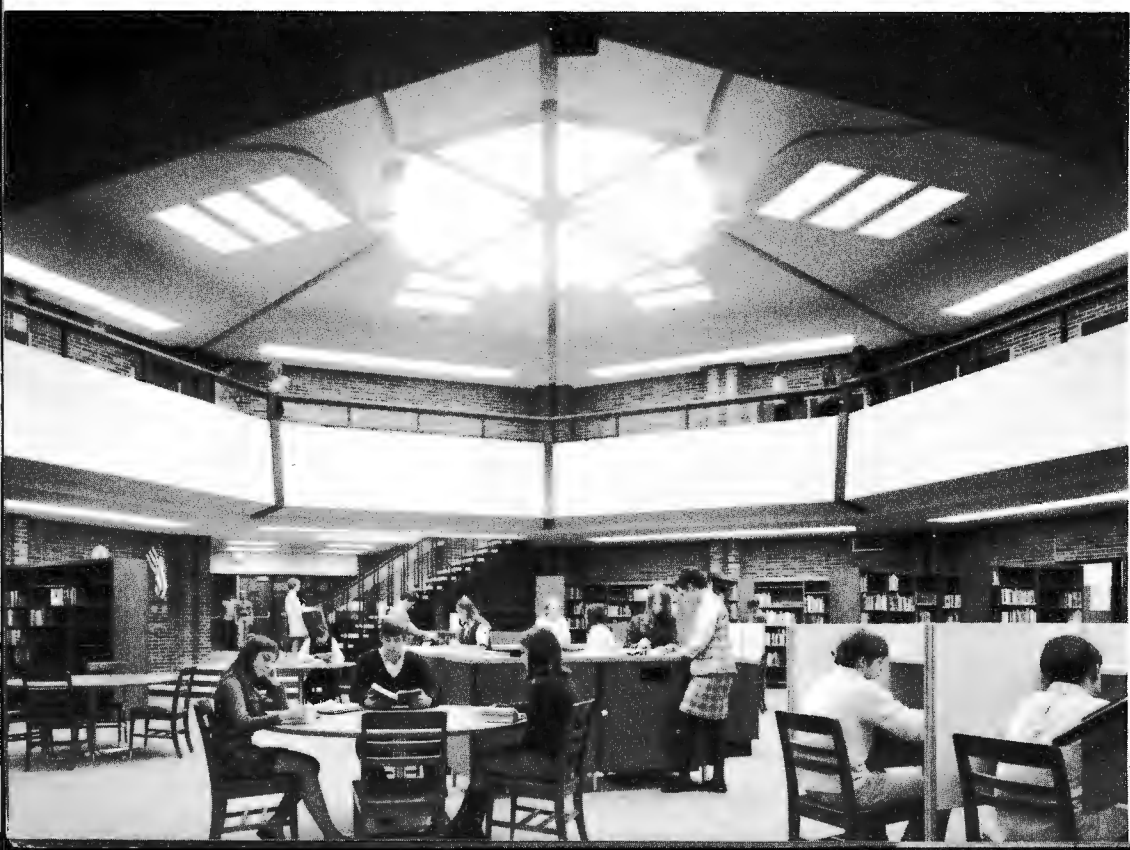
WHAT WE CAN DO FOR YOU

The members of our staff are professionally oriented people dedicated to quality in the performance of their work and devoted to the interests of our clients. They keep up to date on the latest developments in the technology of their respective disciplines and their background of experience and ability is available to you from the beginning of your project to the end.

If you assign a project to us we will first undertake a thorough study of your program and will then initiate an in-depth research into all problem areas. We will present the results of our research to you so that we will both be in agreement as to the best method of achieving your objectives before the design process begins. We will advise you of probable construction costs and as each succeeding step in the planning and construction process is undertaken we will keep you informed of alternative methods of accomplishing the results desired and of the relative costs involved.

Our primary objective is to serve our clients so well that they will continue to use our services and will recommend us to others. That we have been successful in our objective is evident from the fact that we are currently working for so many clients of long standing. For example, we have been doing work for the School District at Grand Blanc since 1923; Bank of Lansing since 1930; Lansing School District since 1934; State of Michigan since 1939; University of Michigan since 1944; School District at Hammond, Indiana, since 1945; Board of Education at Marquette since 1956; Michigan National Bank since 1958; Michigan State University since 1961 and Lansing Community College since 1962.







THE WARREN HOLMES AND KENNETH BLACK COMPANY

ARCHITECTS - ENGINEERS - PLANNERS

820 NORTH WASHINGTON AVENUE - LANSING, MICHIGAN - 48905 (517) 484-3428